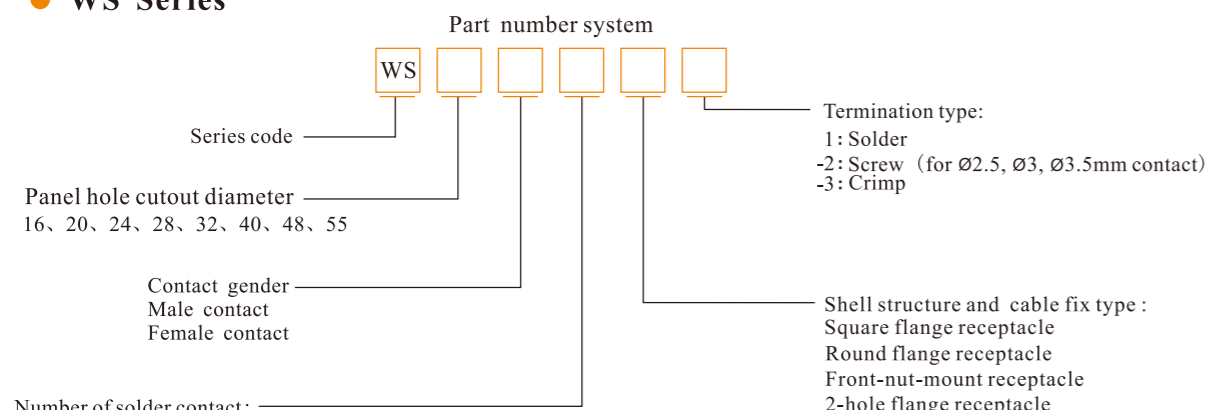




● **WS Series**



- Number of solder contact: 2, 3, 4, 5, 6, 7, 8, 9, 10, 11, 12, 13, 15, 16, 17, 19, 20, 24, 26, 27, 31, 35, 38, 40, 42, 53, 61
- Number of crimp contact: 1, 2, 3, 4, 5, 6, 7, 8, 9, 10, 12, 15, 19, 31, 38, 42, 61

- Straight**
- Receptacle with cable clamping plates B (for WS16-28)
 - Receptacle with cable clamping plates (for WS32-55)
 - Plug with PVC sleeve
 - Receptacle with PVC sleeve B (for WS16-28)
 - Receptacle with PVC sleeve (for WS32-55)
 - Plug for metal hose
 - Receptacle for metal hose B (for WS16-28)
 - Receptacle for metal hose (for WS32-55)
 - Plug for plastic hose
 - Receptacle for plastic hose B (for WS16-28)
 - Receptacle for plastic hose (for WS32-55)
 - Plug for PA-hose (for WS16-28)
 - In-line receptacle for PA-hose B (for WS16-28)
 - In-line receptacle for PA-hose (for WS16-28)

- Angled**
- Plug / receptacle for metal hose
 - Plug / receptacle with cable clamping plates
 - Plug / receptacle for plastic hose

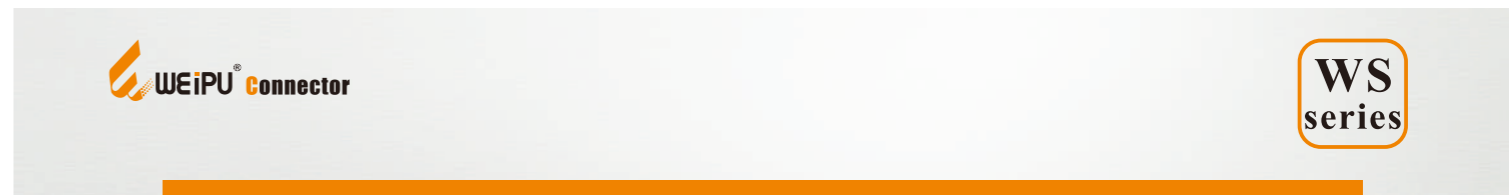
● **Remarks :** The rated current decreases according to the number of contacts, more contacts, less rated current.

Number of contact	1-3	4-10	11-20	21-30	31-40	41-50	51-61
Rated current decrease rate	0	10	20	30	40	50	60

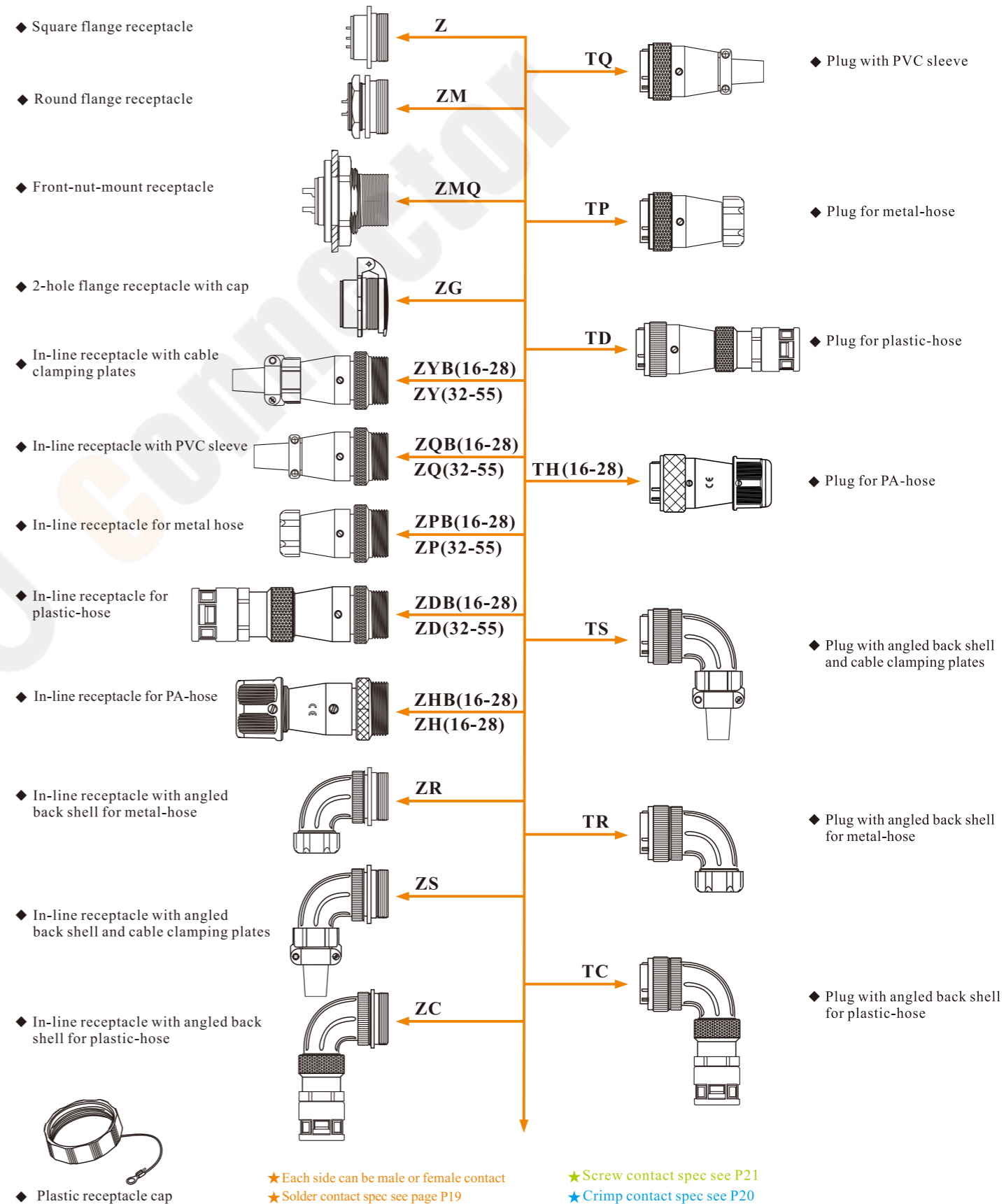
Material and spec

Coupling	Threaded
Shell material	Zinc alloy with chrome plating
Insert material	PPS, max temperature 260 °C
Contact material	Brass with gold plating
Termination	Solder: Ø1, Ø1.5, Ø2.5, Ø3.5, Ø5.5mm; Screw: Ø2.5, Ø3, Ø3.5mm; Crimp: Ø1, Ø1.5, Ø2.5, Ø3.5, Ø5.5, Ø10mm
Mating cycle	500
Temperature range	-40°C ~ +85°C

★ Each side can be male or female contact ★ Screw contact spec see P21
 ★ Solder contact spec see page P19 ★ Crimp contact spec see P20

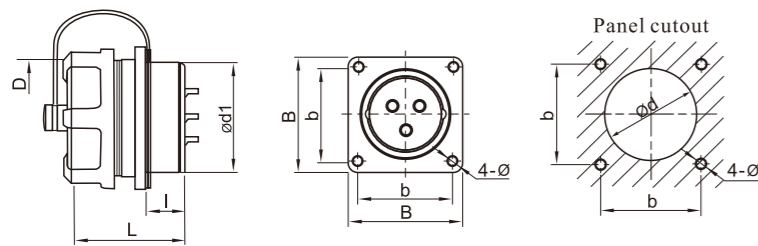


WS Series Mating diagram



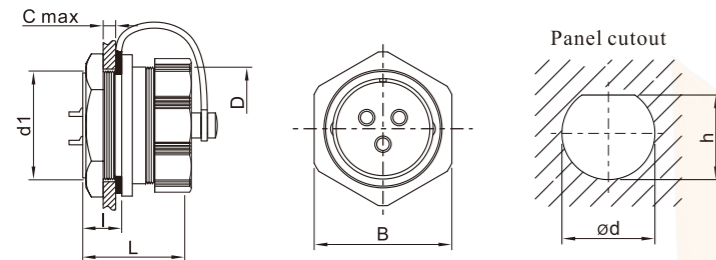


● Square flange mount receptacle: Z



Dimension(mm)	WS16	WS20	WS24	WS28	WS32	WS40	WS48	WS55
ød1	15.8	19.8	23.8	27.8	31.8	39.8	47.8	54.8
D	M18X1	M22X1	M26X1	M30X1	M35X1.5	M44X1.5	M52X1.5	M59X1.5
I	9.7	10	10	10	14.4	14.2	14.2	14
L	21.6	23	23	23	34	34	34	34
b	20	22	26	30	32	40	48	52
B	26	29	32	36	42	50	58	64
ød	16.5	20.5	24.5	28.5	32.5	40.5	48.5	55.5
ø	3.2	3.2	3.2	3.2	3.5	4.5	4.5	4.5

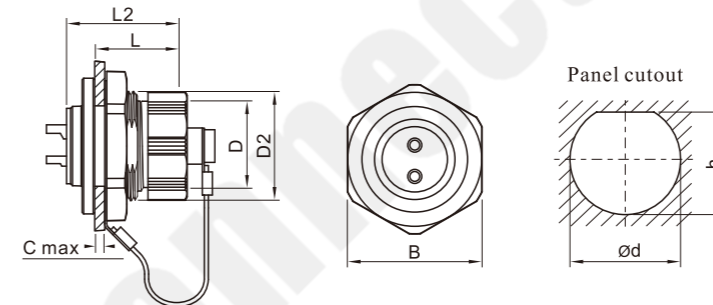
● Round flange receptacle: ZM



Dimension(mm)	WS16	WS20	WS24	WS28
d1	M16X1	M20X1	M24X1	M28X1
D	M18X1	M22X1	M26X1	M30X1
C	5	5	5	5
I	9.7	9.9	10	10.2
L	22	23	23	23
B	21.2	25.5	29.2	33.3
ød	15.7	19.7	23.7	27.7
h	15.3	19.3	23.2	26.9

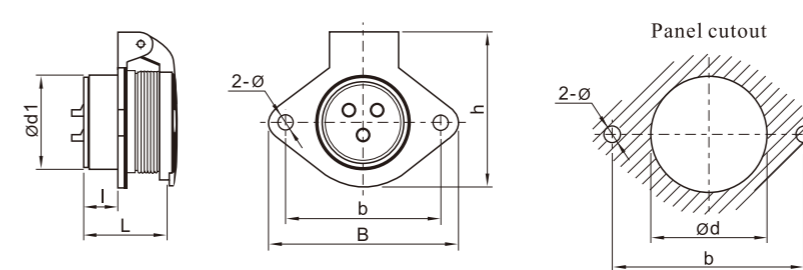


● Front-nut-mount receptacle: ZMQ



Dimension(mm)	WS16	WS20	WS24	WS28
øD	M18X1	M22X1	M26X1	M30X1
D2	M22X1	M26X1	M30X1	M34X1
L	16	17	17	17
L2	21.6	23	23	23
C	5	5	5	5
B	26.8	30.8	34.8	38.8
ød	22	26	30	34
h	20.6	24.6	28.6	32.6

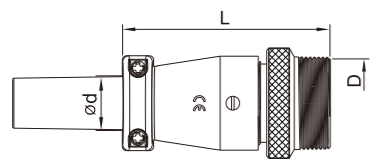
● 2-hole flange receptacle with cap: ZG



Dimension(mm)	WS16	WS20	WS24	WS28	WS32	WS40	WS48	WS55
ød1	15.8	19.8	23.8	27.8	31.8	39.8	47.8	54.8
I	10	10	10	10	15.4	14.7	14.3	14
L	22	23	23	23	34	34	34	34
b	30	35	40	45	55	65	80	85
B	38	44	50	55	67	77	92	98
h	32.5	36.5	40.5	45.5	52.5	63.5	74.5	80
ød	16.5	20.5	24.5	28.5	32.5	40.5	48.5	55.5
ø	3.5	4.5	4.5	4.5	5.5	5.5	5.5	6.5



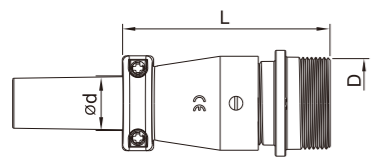
● In-line receptacle with PVC sleeve B: ZQB



Dimension(mm)	WS16	WS20	WS24	WS28
D	M18X1	M22X1	M26X1	M30X1
L	44.5	49	53	55
ød max	10.5	13	13.5	17.5

P18 Optional cap size see P18
P18 PVC sleeve dimension see P18

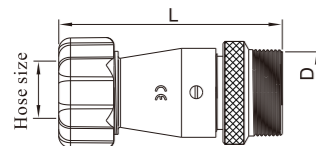
● In-line receptacle with PVC sleeve: ZQ



Dimension(mm)	WS32	WS40	WS48	WS55
D	M35X1.5	M44X1.5	M52X1.5	M59X1.5
L	70.5	76.5	85	97.5
ød max	21.5	26	26	32

P18 Optional cap size see P18
P18 PVC sleeve dimension see P18

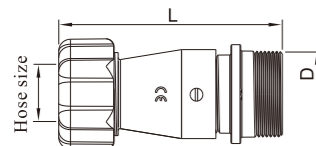
● In-line receptacle for metal-hose B: ZPB



Dimension(mm)	WS16	WS20	WS24	WS28
D	M18X1	M22X1	M26X1	M30X1
L	50	57.5	60.5	64.5
Hose size	1/4"	3/8"	3/8"	1/2"

Optional cap size see P18

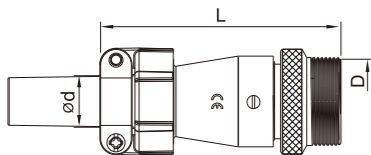
● In-line receptacle for metal-hose: ZP



Dimension(mm)	WS32	WS40	WS48	WS55
D	M35X1.5	M44X1.5	M52X1.5	M59X1.5
L	80	87	97	113
Hose size	3/4"	1"	I: 1" II: 1 1/4"	1 1/4"

Optional cap size see P18

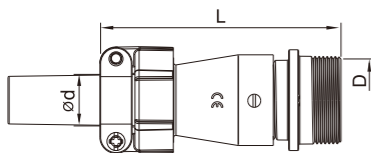
● In-line receptacle with cable clamping plates B: ZYB



Dimension(mm)	WS16	WS20	WS24	WS28
D	M18X1	M22X1	M26X1	M30X1
L	50.5	60.5	63.5	69
ød max	10.4	13.5	13.5	17

Optional cap size see P18
PVC sleeve dimension see P18

● In-line receptacle with cable clamping plates: ZY

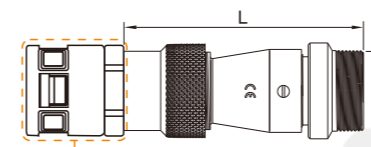


尺寸 Dimension(mm)	WS32	WS40	WS48	WS55
D	M35X1.5	M44X1.5	M52X1.5	M59X1.5
L	86	95	102	117.5
ød max	19	25	I: 24 II: 32	32

Optional cap size see P18
PVC sleeve dimension see P18



● In-line receptacle for plastic-hose B: ZDB

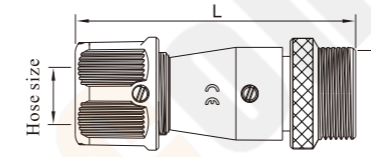


Optional plastic hose adapter

Dimension(mm)	WS16	WS20	WS24	WS28
D	M18X1	M22X1	M26X1	M30X1
L	55.5	64.5	69	75.5
Adapter size	PG7	PG11	PG11	PG16
model of plastic hose adapter	WQG-PG7(B)	WQG-PG11(B)	WQG-PG11(B)	WQG-PG16(B)
Hose size	AD10	AD15.8	AD15.8	AD21.2

Optional cap size see P18

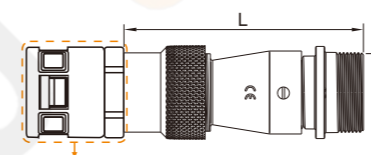
● In-line receptacle for PA-hose B: ZHB



Dimension(mm)	WS16	WS20	WS24	WS28
D	M18X1	M22X1	M26X1	M30X1
L	52.6	63	67	71
Hose size	AD10	AD15.8	AD15.8	AD21.2

Optional cap size see P18

● In-line receptacle for plastic-hose: ZD

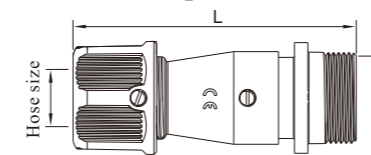


Optional plastic hose adapter

Dimension(mm)	WS32	WS40	WS48	WS55
D	M35X1.5	M44X1.5	M52X1.5	M59X1.5
L	89.5	96.5	105	119.5
Adapter size	PG21	PG29	I: PG29 II: PG36	PG36
model of plastic hose adapter	WQG-PG21(B)	WQG-PG29(B)	I: WQG-PG29(B) II: WQG-PG36(B)	WQG-PG36(B)
Hose size	AD28.5	AD34.5	I: AD34.5 II: AD42.5	AD42.5

Optional cap size see P18

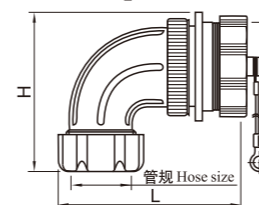
● In-line receptacle for PA-hose: ZH



Dimension(mm)	WS16	WS20	WS24	WS28
D	M18X1	M22X1	M26X1	M30X1
L	55	61	66	70
Hose size	AD10	AD15.8	AD15.8	AD21.2

Optional cap size see P18

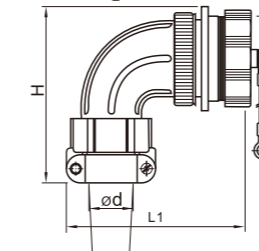
● In-line receptacle with angled back shell for metal-hose: ZR



Dimension(mm)	WS20	WS24	WS28	WS32	WS40	WS48	WS55
D	M22X1	M26X1	M30X1	M35X1.5	M44X1.5	M52X1.5	M59X1.5
L	61	60.5	64.5	83.5	90.5	97	114.5
H	48	51.5	52	63.5	74.5	85	98
Hose size	3/8"	3/8"	1/2"	3/4"	1"	1"	1 1/4"

Optional cap size see P18

● In-line receptacle with angled back shell and cable clamping plates: ZS

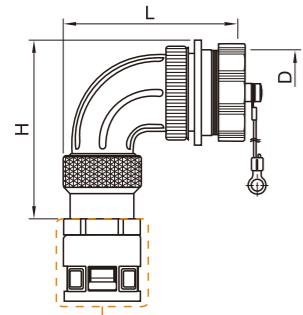


Dimension(mm)	WS20	WS24	WS28	WS32	WS40	WS48	WS55
D	M22X1	M26X1	M30X1	M35X1.5	M44X1.5	M52X1.5	M59X1.5
L	60.5	60.5	64.5	82	89	95.5	114
H	56.5	57	63.5	72	83.5	94.5	112.5
ød max	13.5	13	17	19	23	24	32

Optional cap size see P18



● In-line receptacle with angled back shell for plastic-hose: ZC

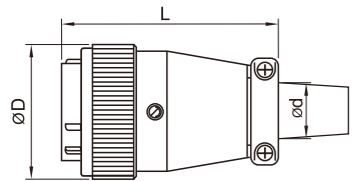


Optional plastic hose adapter

Dimension(mm)	WS20	WS24	WS28	WS32	WS40	WS48	WS55
D	M22X1	M26X1	M30X1	M35X1.5	M44X1.5	M52X1.5	M59X1.5
L	60	61	63	82	88.5	95	112
H	58	60	65	75.5	83	95.5	104
Adapter size	PG11	PG11	PG16	PG21	PG29	PG29	PG36
model of plastic hose adapter	WQG-PG11(B)	WQG-PG11(B)	WQG-PG16(B)	WQG-PG21(B)	WQG-PG29(B)	WQG-PG29(B)	WQG-PG36(B)
Hose size	AD15.8	AD15.8	AD21.2	AD28.5	AD34.5	AD34.5	AD42.5

P18 Optional cap size see P18

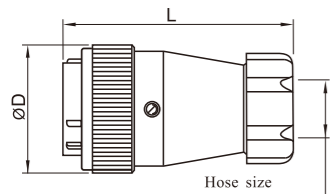
● Plug with PVC sleeve: TQ



Dimension(mm)	WS16	WS20	WS24	WS28	WS32	WS40	WS48	WS55
ØD	21.5	26	30	34	39.5	49.5	57	64.5
L	44	49	53	55	69	76	85	97
Ød max	10.5	13	13.5	17.5	21.5	26	26	32

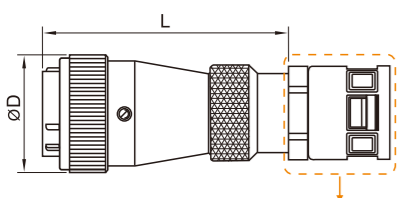
Optional cap size see P18

● Plug for metal-hose: TP



Dimension(mm)	WS16	WS20	WS24	WS28	WS32	WS40	WS48	WS55
ØD1	21.5	26	30	34	39.5	49.5	57	64.5
L	48.5	57	61	64	81	86	96.5	112
Hose size	1/4"	3/8"	3/8"	1/2"	3/4"	1"	I: 1" II: 1 1/4"	1 1/4"

● Plug for plastic-hose: TD

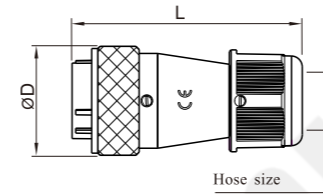


Optional plastic hose adapter

Dimension(mm)	WS16	WS20	WS24	WS28	WS32	WS40	WS48	WS55
ØD	21.5	26	30	34.5	39.5	49.5	57	64.5
L	56	64.5	68.5	73	88.5	95.5	105	119
Adapter size	PG7	PG11	PG11	PG16	PG21	PG29	I: PG29 II: PG36	PG36
model of plastic hose adapter	WQG-PG7(B)	WQG-PG11(B)	WQG-PG11(B)	WQG-PG16(B)	WQG-PG21(B)	WQG-PG29(B)	I: WQG-PG29(B) II: WQG-PG36(B)	WQG-PG36(B)
Hose size	AD10	AD15.8	AD15.8	AD21.2	AD28.5	AD34.5	I: AD34.5 II: AD42.5	AD42.5

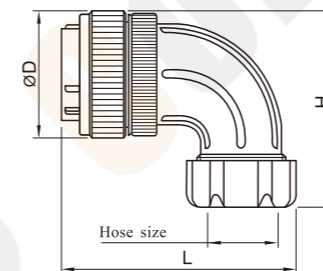


● Plug for PA-hose: TH



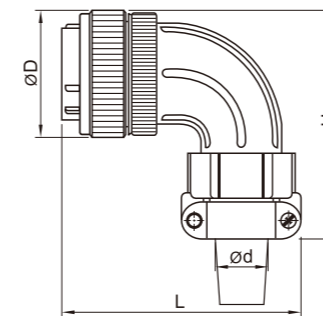
Dimension(mm)	WS16	WS20	WS24	WS28
ØD	22	26.2	30	34
L	52	63.5	66.5	69.5
Hose size	AD10	AD15.8	AD15.8	AD21.2

● Plug with angled back shell for metal-hose: TR



Dimension(mm)	WS20	WS24	WS28	WS32	WS40	WS48	WS55
ØD	27.5	31	35	39	49	57	64.5
H	50	51	54.5	63	73	89	97.5
L	60	60	64	82	87.5	94	115
Hose size	3/8"	3/8"	1/2"	3/4"	1"	1"	1 1/4"

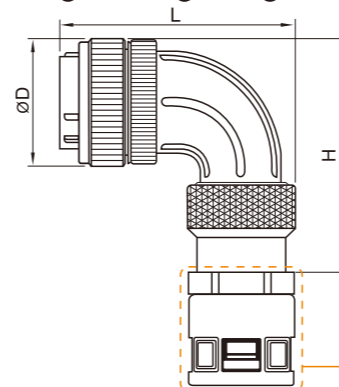
● Plug with angled back shell with cable clamping plates: TS



Dimension(mm)	WS20	WS24	WS28	WS32	WS40	WS48	WS55
ØD	27.5	31	35	39	49.5	57	65
H	53.5	56	61	67.5	78	91	99.5
L	60	60	64	81	88	95	106
Ød max	13.5	13.5	16.8	19	23.5	24	32

P18 Optional cap size see P18

● Plug with right angle back shell for plastic-hose: TC

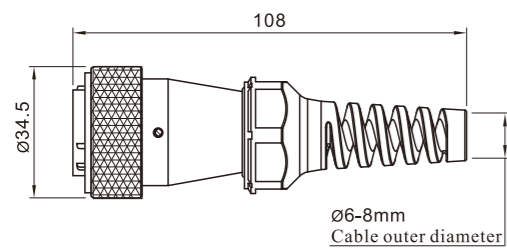


Dimension(mm)	WS20	WS24	WS28	WS32	WS40	WS48	WS55
ØD	27.5	31	35	39	49.5	57	64.5
H	57	62	65	71.5	82	96	104
L	59.5	60	63	81	88	94	112
Adapter size	PG11	PG11	PG16	PG21	PG29	PG29	PG36
model of plastic hose adapter	WQG-PG11(B)	WQG-PG11(B)	WQG-PG16(B)	WQG-PG21(B)	WQG-PG29(B)	WQG-PG29(B)	WQG-PG36(B)
Hose size	AD15.8	AD15.8	AD21.2	AD28.5	AD34.5	AD34.5	AD42.5

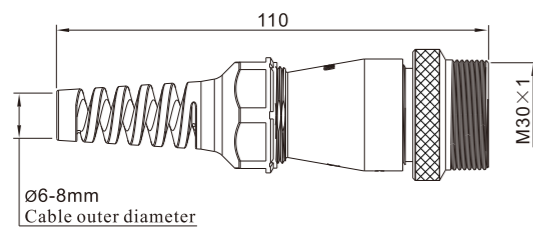
Optional plastic hose adapter



● Plug with strain relief: TX



● In-line receptacle with anti-bending sleeve B: ZXB



★ It can be produced 28 models, other models are customizable

Solder contact spec

★ Crimp contact spec see P20

★ Screw contact spec see P21

WS28	2	3	4	7	8	8B	9	10	10B	12	16	17	20	24	26	35
Male contact face view																
Rated current (A)	50	50	25	25	25	60, 5	25, 5	25	10	10	10	10	5	5	5	5
Contact diameter(mm)	Ø3.5X2	Ø3.5X3	Ø2.5X4	Ø2.5X7	Ø2.5X8	Ø5X2 Ø1X6	Ø2.5X4 Ø1X5	Ø2.5X10	Ø1.5X10	Ø1.5X12	Ø1.5X16	Ø1.5X17	Ø1X20	Ø1X24	Ø1X26	Ø1X35
Rated voltage (AC.V)	500	500	500	500	500	500 400	500	500	500	500	500	500	400	400	400	400
Test voltage(AC.V) 1 min	1500	1500	1500	1500	1500	1500	1500	1500	1500	1500	1500	1500	1200	1200	1200	1200
Contact resistance (mΩ)	0.5	0.5	1	1	1	0.5, 5	1, 5	1	2.5	2.5	2.5	2.5	5	5	5	5
Termination	solder / screw	solder / screw	solder / screw	solder / screw	solder / screw	solder	solder	solder / screw	solder	solder	solder	solder	solder	solder	solder	solder
Wire size (mm ² /AWG)	≤10/7	≤10/7	≤4/11	≤4/11	≤4/11	≤16/5 ≤0.75/18	≤4/11	≤2/14	≤2/14	≤2/14	≤2/14	≤2/14	≤0.75/18	≤0.75/18	≤0.75/18	≤0.75/18
Wire size for screw termination	≤6/10	≤6/10	≤1.5/15	≤1.5/15	≤1.5/15	/	/	≤1.5/15	/	/	/	/	/	/	/	/



Solder contact spec

WS16, WF16, WY16	2	3	4	2B	3B	4B	5	7	9	10
Male contact face view										
Rated current (A)	10	10	5	15	15	15	5	5	5	5
Contact diameter(mm)	Ø1.5X2	Ø1.5X3	Ø1X4	Ø2X2	Ø2X3	Ø2X4	Ø1X5	Ø1X7	Ø1X9	Ø1X10
Rated voltage (AC.V)	500	500	500	500	500	500	500	400	400	400
Test voltage(AC.V) 1 min	1500	1500	1500	1500	1500	1500	1500	1200	1200	1200
Contact resistance(mΩ)	2.5	2.5	5	2.5	2.5	2.5	5	5	5	5
Insulation resistance (MΩ)	2000	2000	2000	2000	2000	2000	2000	2000	2000	2000
Wire size(mm ² /AWG)	≤2/14	≤2/14	≤0.75/18	≤2/14	≤2/14	≤2/14	≤0.75/18	≤0.75/18	≤0.75/18	≤0.75/18

WS20, WF20, WY20	2	3	4	5	6	6B	7	8	9	12	15
Male contact face view											
Rated current (A)	25	25	25	10	5 25	5 30	10	10	5	5	5
Contact diameter(mm)	Ø2.5X2	Ø2.5X3	Ø2.5X4	Ø1.5X5	Ø1X2 Ø2.5X4	Ø1X4 Ø3X2	Ø1.5X7	Ø1.5X8	Ø1X9	Ø1X12	Ø1X15
Rated voltage (AC.V)	500	500	500	500	500	500	500	500	400	400	400
Test voltage(AC.V) 1 min	1500	1500	1500	1500	1500	1500	1500	1500	1200	1200	1200
Contact resistance(mΩ)	1	1	1	2.5	5 1	5 1	2.5	2.5	5	5	5
Insulation resistance (MΩ)	2000	2000	2000	2000	2000	2000	2000	2000	2000	2000	2000
Wire size(mm ² /AWG)	≤4/11	≤4/11	≤4/11	≤2/14	≤0.75/18 ≤4/11	≤0.75/18 ≤4/11	≤2/14	≤2/14	≤0.75/18	≤0.75/18	≤0.75/18

WS24, WF24, WY24	2	3	4	9	10	12	12B	19
Male contact face view								
Rated current (A)	25	25	25	5 25	10	10	5 30	5
Contact diameter(mm)	Ø2.5X2	Ø2.5X3	Ø2.5X4	Ø1X5 Ø2.5X4	Ø1.5X10	Ø1.5X12	Ø1X9 Ø3X3	Ø1X19
Rated voltage (AC.V)	500	500	500	500	500	500	500	400
Test voltage(AC.V) 1 min	1500	1500	1500	1500	1500	1500	1500	1200
Contact resistance(mΩ)	1	1	1	5 1	2.5	2.5	5 1	5
Insulation resistance (MΩ)	2000	2000	2000	2000	2000	2000	2000	2000
Wire size(mm ² /AWG)	≤4/11	≤4/11	≤4/11	≤0.75/18 ≤4/11	≤2/14	≤2/14	≤0.75/18 ≤4/11	≤0.75/18

WS28, WF28, WY28	2	3	4	7	8	8B	9	10	10B	12	16	17	20	24	26	35
Male contact face view																
Rated current (A)	50	50	25	25	25	60.5	25.5	25	10	10	10	10	5	5	5	5
Contact diameter(mm)	Ø3.5X2	Ø3.5X3	Ø2.5X4	Ø2.5X7	Ø2.5X8	Ø5X2 Ø1X6	Ø2.5X4 Ø1X5	Ø2.5X10	Ø1.5X10	Ø1.5X12	Ø1.5X16	Ø1.5X17	Ø1X20	Ø1X24	Ø1X26	Ø1X35
Rated voltage (AC.V)	500	500	500	500	500	500 400	500	500	500	500	500	500	400	400	400	400
Test voltage(AC.V) 1 min	1500	1500	1500	1500	1500	1500	1500	1500	1500	1500	1500	1500	1200	1200	1200	1200
Contact resistance(mΩ)	0.5	0.5	1	1	1	0.5.5	1.5	1	2.5	2.5	2.5	2.5	5	5	5	5
Insulation resistance (MΩ)	2000	2000	2000	2000	2000	2000	2000	2000	2000	2000	2000	2000	2000	2000	2000	2000
Wire size(mm ² /AWG)	≤10/7	≤10/7	≤4/11	≤4/11	≤4/11	≤16/5 ≤0.75/18	≤4/11 ≤0.75/18	≤4/11	≤2/14	≤2/14	≤2/14	≤2/14	≤0.75/18	≤0.75/18	≤0.75/18	≤0.75/18

Solder contact spec

WS32, WF32, WY32	4	6	8	8B	10	10B	11	12	13	19
Male contact face view										
Rated current (A)	50	10 50	10 50	10 50	10 25	25	25	25	10 25	10
Contact diameter(mm)	Ø3.5X4	Ø1.5X2 Ø3.5X4	Ø1.5X5 Ø3.5X3	Ø1.5X4 Ø3.5X4	Ø1.5X5 Ø2.5X5	Ø2.5X10	Ø2.5X11	Ø2.5X12	Ø1.5X9 Ø2.5X4	Ø1.5X19
Rated voltage (AC.V)	500V	500V	500V	500V	500V	500V	500V	500V	500V	500V
Test voltage(AC.V) 1 min	1500V	1500V	1500V	1500V	1500V	1500V	1500V	1500V	1500V	1500V
Contact resistance(mΩ)	0.5	2.5 0.5	2.5 0.5	2.5 0.5	2.5 1	1	1	1	2.5 1	2.5
Insulation resistance (MΩ)	2000	2000	2000	2000	2000	2000	2000	2000	2000	2000
Wire size(mm ² /AWG)	≤10/7	≤2/14 ≤10/7	≤2/14 ≤10/7	≤2/14 ≤10/7	≤2/14 ≤4/11	≤4/11	≤4/11	≤4/11	≤2/14 ≤4/11	≤2/14

WS40, WF40, WY40	5	9	15	26	31	52
Male contact face view						
Rated current (A)	50	25 50	10	10 25	10	5
Contact diameter(mm)	Ø3.5X5	Ø2.5X5 Ø3.5X4	Ø1.5X15	Ø1.5X22 Ø2.5X4	Ø1.5X31	Ø1X52
Rated voltage (AC.V)	500	500	500	500	500	400
Test voltage(AC.V) 1 min	1500	1500	1500	1500	1500	1200
Contact resistance(mΩ)	0.5	1 0.5	2.5	2.5.1	2.5	5
Insulation resistance (MΩ)	2000	2000	2000	2000	2000	2000
Wire size(mm ² /AWG)	≤10/7	≤4/11 ≤10/7	≤2/14	≤2/14 ≤4/11	≤2/14	≤0.75/18

WS48, WF48, WY48	5	7	20	27	38	42
Male contact face view						
Rated current (A)	100	50	25	10 25	10 25	10
Contact diameter(mm)	Ø5.5X5	Ø3.5X7	Ø2.5X20	Ø1.5X26 Ø2.5X1	Ø1.5X33 Ø2.5X5	Ø1.5X42
Rated voltage (AC.V)	500	500	500	500	500	500
Test voltage(AC.V) 1 min	1500	1500	1500	1500	1500	1500
Contact resistance(mΩ)	0.3	0.5	1	2.5.1	2.5.1	2.5
Insulation resistance (MΩ)	2000	2000	2000	2000	2000	2000
Wire size(mm ² /AWG)	≤25/3	≤10/7	≤4/11	≤2/14 ≤4/11	≤2/14 ≤4/11	≤2/14

WS55, WF55, WY55	4	7	40	53	61
Male contact face view					
Rated current (A)	50 150	50 100	10 25	10 25	10
Contact diameter(mm)	Ø3.5X1 Ø10X3	Ø3.5X1 Ø5.5X6	Ø1.5X25 Ø2.5X15	Ø1.5X48 Ø2.5X5	Ø1.5X61
Rated voltage (AC.V)	500	500	500	500	500
Test voltage(AC.V) 1 min	1500	1500	1500	1500	1500
Contact resistance(mΩ)	0.5 0.2	0.5 0.3	2.5 1	2.5 1	2.5
Insulation resistance (MΩ)	2000	2000	2000	2000	2000
Wire size(mm ² /AWG)	≤10/7 ≤70/(2/0)	≤10/7 ≤25/3	≤2/14 ≤4/11	≤2/14 ≤4/11	≤2/14

Crimp contact spec

SF16, SA16, SP17, SY17 WS16, WF16, WY16	1	2	3	4
Male contact face view				
Rated current (A)	50	10	10	5
Contact diameter(mm)	Ø3.5X1	Ø1.5X2	Ø1.5X3	Ø1X4
Rated voltage (AC.V)	500	500	500	400
Test voltage(AC.V) 1 min	1500	1500	1500	1200
Contact resistance(mΩ)	0.5	2.5	2.5	5
Insulation resistance (MΩ)	2000	2000	2000	2000

SF20, SA20, SP21, SY21 WS20, WF20, WY20, WP20	1	2	3	4	5	7	7B	8
Male contact face view								
Rated current (A)	100	25	25	25	10	10	5	5
Contact diameter(mm)	Ø5.5X1	Ø2.5X2	Ø2.5X3	Ø2.5X4	Ø1.5X5	Ø1.5X7	Ø1X7	Ø1X8
Rated voltage (AC.V)	500	500	500	500	500	500	400	400
Test voltage(AC.V) 1 min	1500	1500	1500	1500	1500	1500	1200	1200
Contact resistance(mΩ)	0.3	1	1	1	2.5	2.5	5	5
Insulation resistance (MΩ)	2000	2000	2000	2000	2000	2000	2000	2000

SA24, SP25, SY25 WS24, WF24, WY24	4	5	9	12
Male contact face view				
Rated current (A)	25	25	10	5
Contact diameter(mm)	Ø2.5X4	Ø2.5X5	Ø1.5X9	Ø1X12
Rated voltage (AC.V)	500	500	500	400
Test voltage(AC.V) 1 min	1500	1500	1500	1200
Contact resistance(mΩ)	1	1	2.5	5
Insulation resistance (MΩ)	2000	2000	2000	2000

SA28, SP29, SY29 WS28, WF28, WY28	2	3	7	12	15	19
Male contact face view						
Rated current (A)	50	50	25	10	5	5
Contact diameter(mm)	Ø3.5X2	Ø3.5X3	Ø2.5X7	Ø1.5X12	Ø1X15	Ø1X19
Rated voltage (AC.V)	500	500	500	500	400	400
Test voltage(AC.V) 1 min	1500	1500	1500	1500	1200	1200
Contact resistance(mΩ)	0.5	0.5	1	2.5	5	5
Insulation resistance (MΩ)	2000	2000	2000	2000	2000	2000

Crimp contact spec

WS32, WF32, WY32	4	6	10	15	19
Male contact face view					
Rated current (A)	50	50 10	25	10	10
Contact diameter(mm)	Ø3.5X4	Ø3.5X4 Ø1.5X2	Ø2.5X10	Ø1.5X15	Ø1.5X19
Rated voltage (AC.V)	500	500	500	500	500
Test voltage(AC.V) 1 min	1500	1500	1500	1500	1500
Contact resistance(mΩ)	0.5	0.5 2.5	1	2.5	2.5
Insulation resistance (MΩ)	2000	2000	2000	2000	2000

WS40, WF40, WY40	5	19	31
Male contact face view			
Rated current (A)	50	25	10
Contact diameter(mm)	Ø3.5X5	Ø2.5X19	Ø1.5X31
Rated voltage (AC.V)	500	500	500
Test voltage(AC.V) 1 min	1500	1500	1500
Contact resistance(mΩ)	0.5	1	2.5
Insulation resistance (MΩ)	2000	2000	2000

WS48, WF48, WY48	31	42
Male contact face view		
Rated current (A)	25	10
Contact diameter(mm)	Ø2.5X31	Ø1.5X42
Rated voltage (AC.V)	500	500
Test voltage(AC.V) 1 min	1500	1500
Contact resistance(mΩ)	1	2.5
Insulation resistance (MΩ)	2000	2000

WS55, WF55, WY55	38	61
Male contact face view		
Rated current (A)	25	10
Contact diameter(mm)	Ø2.5X38	Ø1.5X61
Rated voltage (AC.V)	500	500
Test voltage(AC.V) 1 min	1500	1500
Contact resistance(mΩ)	1	2.5
Insulation resistance (MΩ)	2000	2000

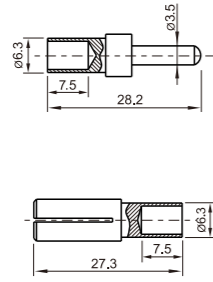
Crimp contact

50A Crimp contact

※ Contact diameter: $\varnothing 3.5$

※ Material: brass with silver plating

※ Contact resistance: $0.5m\Omega$



50A Male crimp contact

For WS/WF/WY16/SY17/SA16/SF16

Wire size	Stripping length	Crimping tool p/n
10.0mm ² AWG 7	10mm	YQK-70

50A Female crimp contact

For WS/WF/WY16/SY17/SA16/SF16

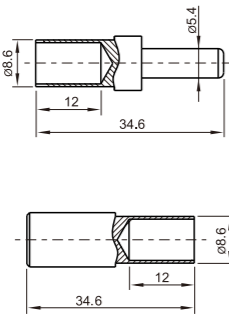
Wire size	Stripping length	Crimping tool p/n
10.0mm ² AWG 7	10mm	YQK-70

100A Crimp contact

※ Contact diameter: $\varnothing 5.5$

※ Material: brass with silver plating

※ Contact resistance: $0.3m\Omega$



100A Male crimp contact

For WS/WF/WY20/SP21/SY21/SA20/SF20/WP20

Wire size	Stripping length	Crimping tool p/n
25mm ² AWG 3	10mm	YQK-70

100A Female crimp contact

For WS/WF/WY20/SP21/SY21/SA20/SF20/WP20

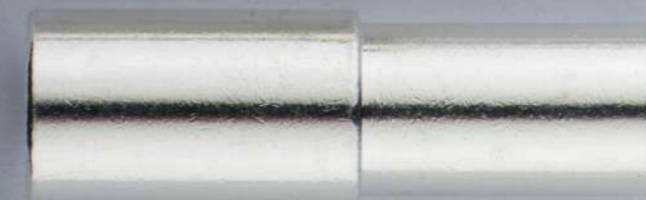
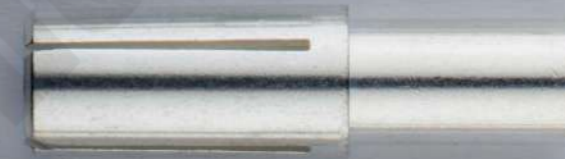
Wire size	Stripping length	Crimping tool p/n
25mm ² AWG 3	10mm	YQK-70

Crimp tool

For crimping the male / female contacts



Part number	Crimping wire range
YQK-70	4-70mm ² AWG 11-2/0



Screw contact spec

SF20, SA20, WS20, WF20, WY20	2	3	4
Male contact face view			
Rated current (A)	10	10	10
Contact diameter(mm)	∅2.5X2	∅2.5X3	∅2.5X4
Rated voltage (AC.V)	500	500	500
Test voltage(AC.V) 1 min	1500	1500	1500
Contact resistance (mΩ)	1	1	1
Wire size (mm ² /AWG)	≤1.5/15	≤1.5/15	≤1.5/15

SP21, SY21, WP20	2	3	4	5
Male contact face view				
Rated current (A)	10	10	10	10
Contact diameter(mm)	∅3×2	∅3×3	∅3×4	∅3×5
Rated voltage (AC.V)	500	500	500	500
Test voltage(AC.V) 1 min	1500	1500	1500	1500
Contact resistance (mΩ)	1	1	1	1
Wire size (mm ² /AWG)	≤1.5/15	≤1.5/15	≤1.5/15	≤1.5/15

SA24, WS24, WF24, WY24, SP25, SY25	2	3	4
Male contact face view			
Rated current (A)	10	10	10
Contact diameter(mm)	∅2.5X2	∅2.5X3	∅2.5X4
Rated voltage (AC.V)	500	500	500
Test voltage(AC.V) 1 min	1500	1500	1500
Contact resistance (mΩ)	1	1	1
Wire size (mm ² /AWG)	≤1.5/15	≤1.5/15	≤1.5/15

SA28, SP29, SY29 WS28, WF28, WY28	2	3	4	7	8	10
Male contact face view						
Rated current (A)	32	32	10	10	10	10
Contact diameter(mm)	∅3.5X2	∅3.5X3	∅2.5X4	∅2.5X7	∅2.5X8	∅2.5X10
Rated voltage (AC.V)	500	500	500	500	500	500
Test voltage(AC.V) 1 min	1500	1500	1500	1500	1500	1500
Contact resistance (mΩ)	0.5	0.5	1	1	1	1
Wire size (mm ² /AWG)	≤6/10	≤6/10	≤1.5/15	≤1.5/15	≤1.5/15	≤1.5/15

Screw contact spec

WS32, WF32, WY32	4	10B	11	12
Male contact face view				
Rated current (A)	32	10	10	10
Contact diameter(mm)	∅3.5X4	∅2.5X10	∅2.5X11	∅2.5X12
Rated voltage (AC.V)	500V	500V	500V	500V
Test voltage(AC.V) 1 min	1500V	1500V	1500V	1500V
Contact resistance (mΩ)	0.5	1	1	1
Insulation resistance (MΩ)	2000	2000	2000	2000
Wire size (mm ² /AWG)	≤6/10	≤1.5/15	≤1.5/15	≤1.5/15

WS40, WF40, WY40	5	9
Male contact face view		
Rated current (A)	32	10 32
Contact diameter(mm)	∅3.5X5	∅2.5X5 ∅3.5X4
Rated voltage (AC.V)	500	500
Test voltage(AC.V) 1 min	1500	1500
Contact resistance (mΩ)	0.5	1 0.5
Insulation resistance (MΩ)	2000	2000
Wire size (mm ² /AWG)	≤6/10	≤1.5/15 ≤6/10

WS48, WF48, WY48	7	20
Male contact face view		
Rated current (A)	32	10
Contact diameter(mm)	∅3.5X7	∅2.5X20
Rated voltage (AC.V)	500	500
Test voltage(AC.V) 1 min	1500	1500
Contact resistance (mΩ)	0.5	1
Insulation resistance (MΩ)	2000	2000
Wire size (mm ² /AWG)	≤6/10	≤1.5/15

Solder connect to crimp

SF16, SA16, SP17, SY17 WS16, WF16, WY16	2	3
Male contact face view		
Rated current (A)	10	10
Contact diameter(mm)	Ø1.5X2	Ø1.5X3
Rated voltage (AC.V)	500	500
Test voltage(AC.V) 1 min	1500	1500
Contact resistance(mΩ)	2.5	2.5
Insulation resistance (MΩ)	2000	2000

SF20, SA20, WS20, WF20, WY20	2	3	4	5	7
Male contact face view					
Rated current (A)	25	25	25	10	10
Contact diameter(mm)	Ø2.5X2	Ø2.5X3	Ø2.5X4	Ø1.5X5	Ø1.5X7
Rated voltage (AC.V)	500	500	500	500	500
Test voltage(AC.V) 1 min	1500	1500	1500	1500	1500
Contact resistance(mΩ)	1	1	1	2.5	2.5
Insulation resistance (MΩ)	2000	2000	2000	2000	2000

SA28, WS28, WF28, WY28 SP29, SY29	2	3	7
Male contact face view			
Rated current (A)	50	50	25
Contact diameter(mm)	Ø3.5X2	Ø3.5X3	Ø2.5X7
Rated voltage (AC.V)	500	500	500
Test voltage(AC.V) 1 min	1500	1500	1500
Contact resistance(mΩ)	0.5	0.5	1
Insulation resistance (MΩ)	2000	2000	2000

WS32, WF32, WY32	4	19
Male contact face view		
Rated current (A)	50	10
Contact diameter(mm)	Ø3.5X4	Ø1.5X19
Rated voltage (AC.V)	500	500
Test voltage(AC.V) 1 min	1500	1500
Contact resistance(mΩ)	0.5	2.5
Insulation resistance (MΩ)	2000	2000

WS40, WF40, WY40	31
Male contact face view	
Rated current (A)	10
Contact diameter(mm)	Ø1.5X31
Rated voltage (AC.V)	500
Test voltage(AC.V) 1 min	1500
Contact resistance(mΩ)	2.5
Insulation resistance (MΩ)	2000

Solder connect to crimp

WS48, WF48, WY48	42
Male contact face view	
Rated current (A)	10
Contact diameter(mm)	Ø1.5X42
Rated voltage (AC.V)	500
Test voltage(AC.V) 1 min	1500
Contact resistance(mΩ)	2.5
Insulation resistance (MΩ)	2000

WS55, WF55, WY55	61
Male contact face view	
Rated current (A)	10
Contact diameter(mm)	Ø1.5X61
Rated voltage (AC.V)	500
Test voltage(AC.V) 1 min	1500
Contact resistance(mΩ)	2.5
Insulation resistance (MΩ)	2000

Screw connect to crimp

SF20, SA20, WS20, WF20, WY20	2	3
Male contact face view		
Rated current (A)	10	10
Contact diameter(mm)	Ø2.5X2	Ø2.5X3
Rated voltage (AC.V)	500	500
Test voltage(AC.V) 1 min	1500	1500
Contact resistance(mΩ)	1	1
Insulation resistance (MΩ)	2000	2000

SA28, WS28, WF28, WY28	7
Male contact face view	
Rated current (A)	10
Contact diameter(mm)	Ø2.5X7
Rated voltage (AC.V)	500
Test voltage(AC.V) 1 min	1500
Contact resistance(mΩ)	1
Insulation resistance (MΩ)	2000

WS32, WF32, WY32	4
Male contact face view	
Rated current (A)	32
Contact diameter(mm)	Ø3.5X4
Rated voltage (AC.V)	500
Test voltage(AC.V) 1 min	1500
Contact resistance(mΩ)	0.5
Insulation resistance (MΩ)	2000