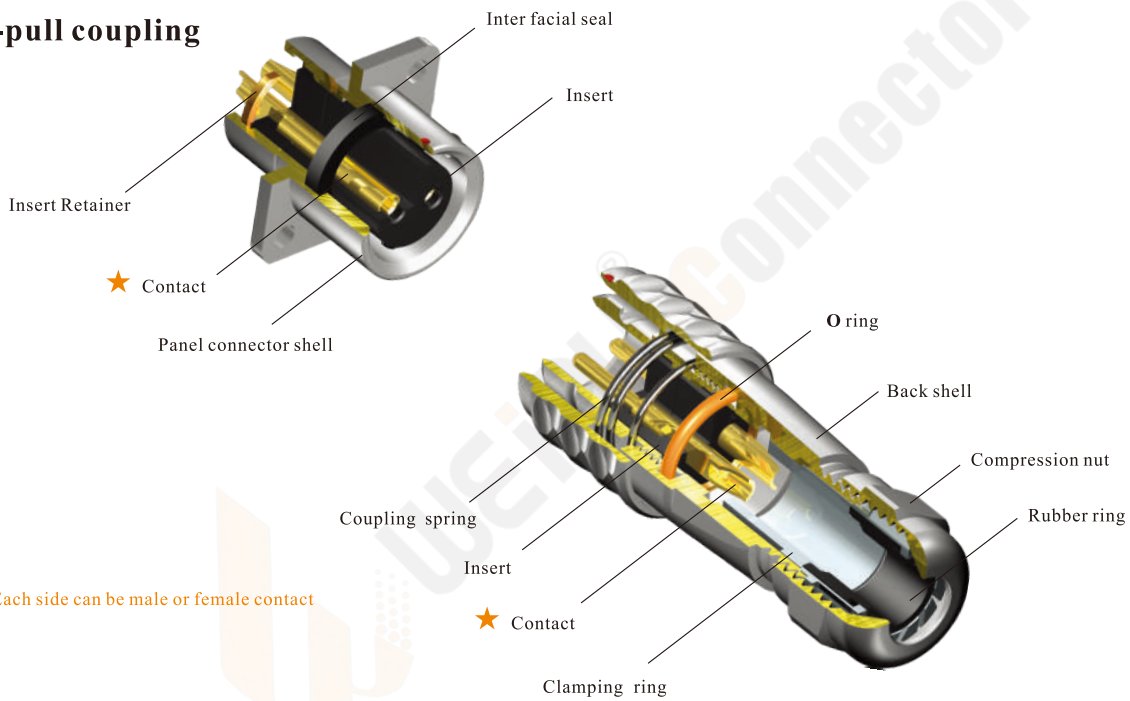


IP67

02



- SF Series IP67
- Push-pull coupling



Material and spec

| Coupling | Push-pull |
|----------------------------|--|
| Shell material | Brass with chrome plating |
| Insert material | PPS max temperature 260 °C |
| Contact material | Brass with gold plating |
| Termination | Solder: SF6, SF8, SF10, SF12, SF16, SF20 Crimp: SF16, SF20 Screw: SF20 (Ø2.5mm contact) |
| Cable outer diameter range | SF6: I: 2-3mm, II: 3-4mm SF12: I: 4-6.5mm, II: 5-8mm SF8: I: 3-4mm, II: 4-5mm SF16: I: 5-8mm, II: 8-12mm SF10: I: 3-4mm, II: 4-6.5mm SF20: I: 5-9mm, II: 8-12mm |
| IP rating | IP67 |
| Mating cycle | 500 |
| Temperature range | -40°C ~ +85°C |
| Insulation resistance | 2000MΩ |

SF12 Series

**SF
12**

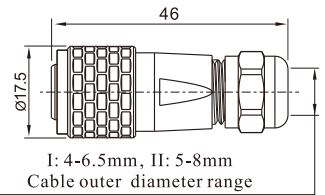
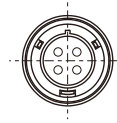
02



Cable connector
Mate with SF1211, SF1212,
SF1213, SF1215

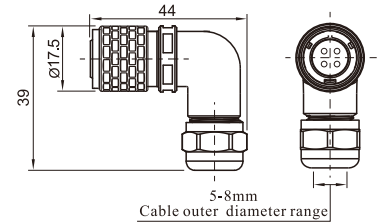
SF1210 / P — Male contact
SF1210 / S — Female contact

Cable outer diameter
I: 4-6.5mm, II: 5-8mm
Number of contact
Female contact



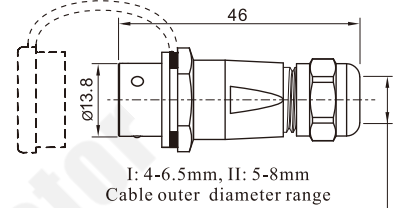
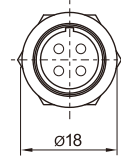
SF1214 / P—II SF1214 / S—II

Angled cable connector
Mate with SF1211, SF1212, SF1213, SF1215



SF1211 / P — SF1211 / S —

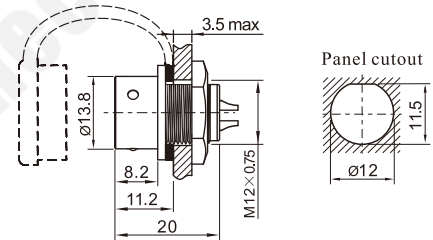
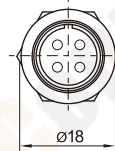
In-line cable connector
Mate with SF1210, SF1214



SF1212 / P — SF1212 / S —

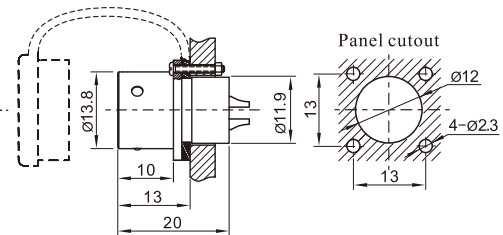
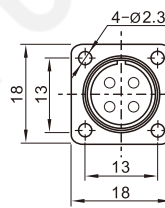
Rear-nut mount
Mate with SF1210,
SF1214

Number of contact



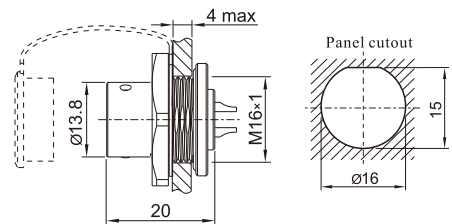
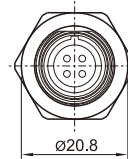
SF1213 / P — SF1213 / S —

Square flange
Mate with SF1210,
SF1214



SF1215 / P — SF1215 / S —

Front-nut mount
Mate with SF1210,
SF1214



Solder contact spec

| Number of contact | 2 | 3 | 4 | 5 | 6 | 7 | 9 |
|----------------------------------|--------|--------|----------|----------|----------|----------|---------|
| Male contact face view | | | | | | | |
| Rated current (A) | 13 | 13 | 5 | 5 | 5 | 5 | 3 |
| Contact diameter(mm) | Ø1.6X2 | Ø1.6X3 | Ø1X4 | Ø1X5 | Ø1X6 | Ø1X7 | Ø0.7X9 |
| Rated voltage (AC.V) | 250 | 250 | 200 | 180 | 125 | 125 | 125 |
| Test voltage(AC.V) 1 min | 1500 | 1500 | 1500 | 1000 | 1000 | 1000 | 1000 |
| Contact resistance (mΩ) | 2.5 | 2.5 | 5 | 5 | 5 | 5 | 10 |
| Wire size (mm ² /AWG) | ≤2/14 | ≤2/14 | ≤0.75/18 | ≤0.75/18 | ≤0.75/18 | ≤0.75/18 | ≤0.5/20 |

SF12 Series

**SF
12**

02



Cable connector
Mate with SF1211, SF1212,
SF1213

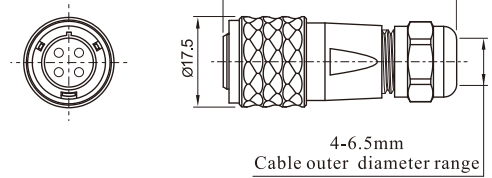
SF1210 / P — SF1210 / S

Male contact

(U):

Number of contact

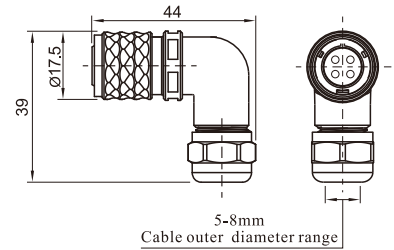
Female contact



Angled cable connector
Mate with SF1211, SF1212, SF1213

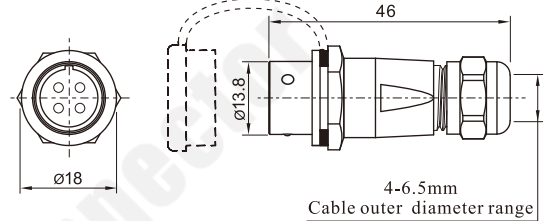
SF1214 / P — II — SF1214 / S — II

(U):



In-line cable connector
Mate with SF1210, SF1214

SF1211 / P — SF1211 / S —

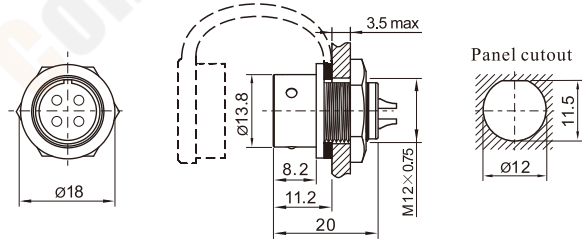


Rear-nut mount
Mate with SF1210,
SF1214

SF1212 / P — SF1212 / S

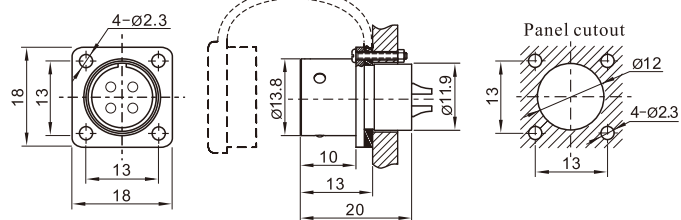
(U):

Number of contact



Square flange
Mate with SF1210,
SF1214

SF1213 / P — SF1213 / S —



Solder contact spec

| Number of contact | 4 | 5 | 6 | 7 |
|--------------------------|------|------|------|------|
| Male contact face view | | | | |
| Rated current (A) | 5 | 5 | 5 | 5 |
| Contact diameter(mm) | Ø1X4 | Ø1X5 | Ø1X6 | Ø1X7 |
| Rated voltage (AC.V) | 300 | 300 | 300 | 300 |
| Test voltage(AC.V) 1 min | 1500 | 1000 | 1000 | 1000 |
| Contact resistance (mΩ) | 5 | 5 | 5 | 5 |
| Wire size (AWG) | 18 | 18 | 18 | 18 |