

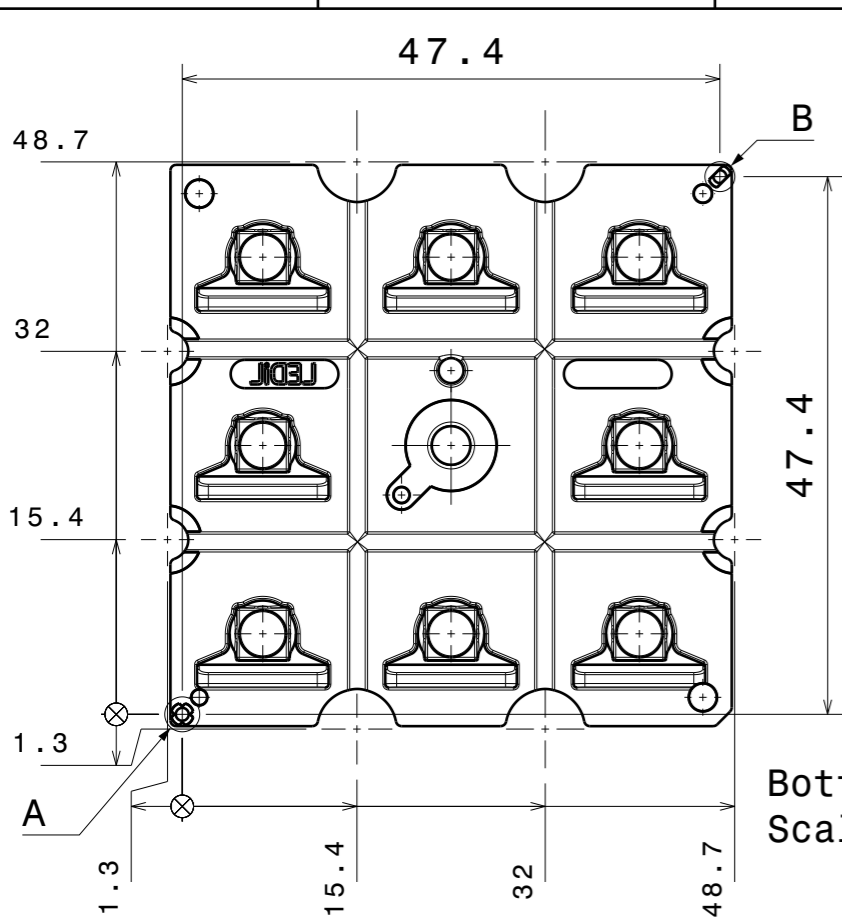
DETAILS

Product Number	C16226_STRADELLA-8-HV-ME
Family	Stradella
Type	Lens array
Color	clear
Diameter	49,5+49,5 mm
Height	5,5 mm
Style	rectang
Optic Material	PMMA
Holder Material	
Fastening	pin, screw
Status	production ready
ROHS Compliant	Yes
Date Updated	11/09/2017

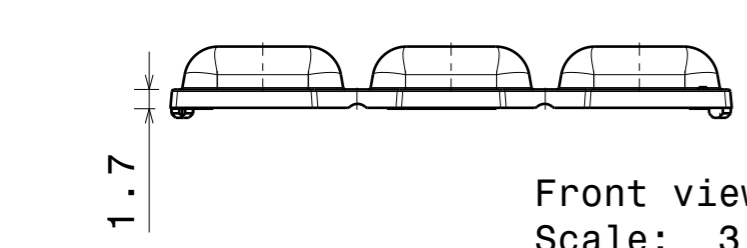


OPTICAL PROPERTIES

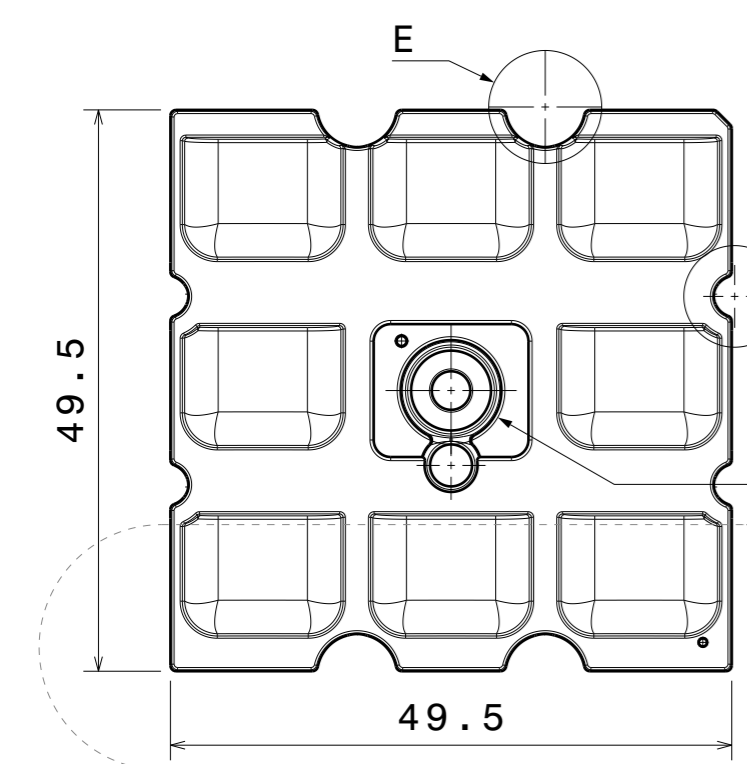
LED	Viewing Angle	Light Beam	Efficiency	cd/lm	Connector
XT-E	sim: Asymmetric	Asymmetric	sim: 92 %	sim: 0.773	-
XD16	Asymmetric	degAsymmetric	94 %	0.850	-
XP-G3	sim: Asymmetric	Asymmetric	sim: 91 %	sim: 0.520	-
LUXEON 3030 2D	sim: Asymmetric	Asymmetric	sim: 94 %	sim: 0.817	-
NVSxx19B/NVSxx19C	sim: Asymmetric	Asymmetric	sim: 92 %	sim: 0.540	-
NVSxx19B/NVSxx19C	sim: Asymmetric	Asymmetric	sim: 82 %	sim: 0.380	Undefined Manufacturer: Protective Plate, Glass
NVSxE21A	sim: Asymmetric	Asymmetric	sim: 93 %	sim: 0.740	-
Oslon Square Gen3	sim: Asymmetric	Asymmetric	sim: 94 %	sim: 0.783	-
OSCONIQ P 3737 (2W version)	sim: Asymmetric	Asymmetric	sim: 94 %	sim: 0.710	-
Z8Y22	sim: Asymmetric	Asymmetric	sim: 93 %	sim: 0.710	-
Z8Y22P	sim: Asymmetric	Asymmetric	sim: 93 %	sim: 0.580	-



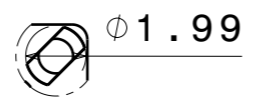
Bottom view
Scale: 3:2



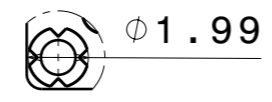
Front view
Scale: 3:2



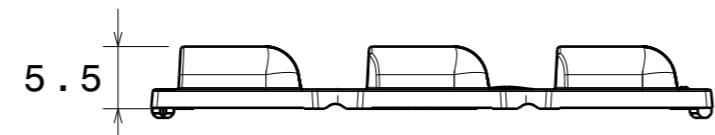
Top view
Scale: 3:2



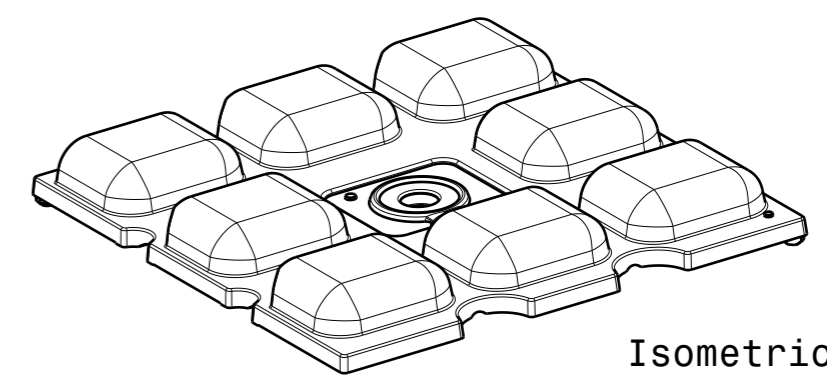
Detail B
Scale: 4:1



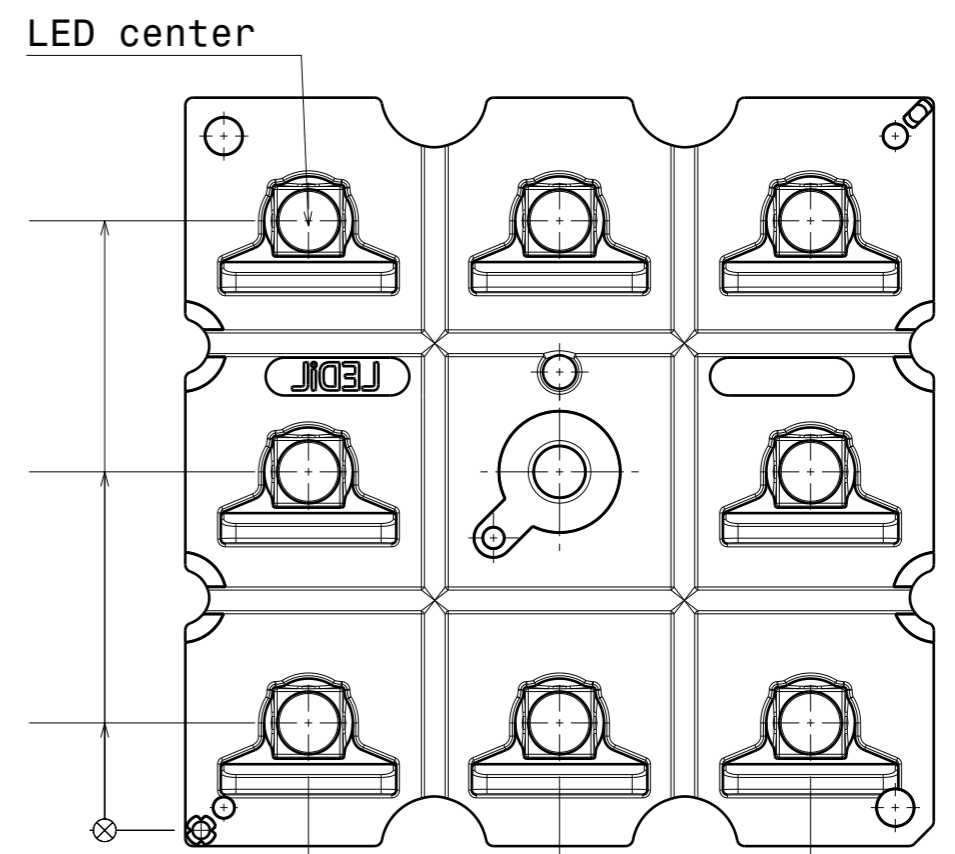
Detail A
Scale: 4:1



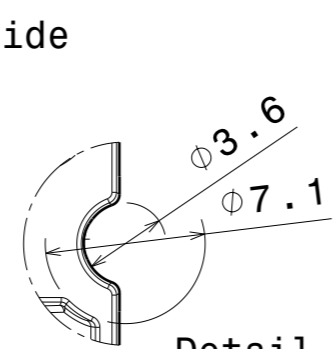
Left view
Scale: 3:2



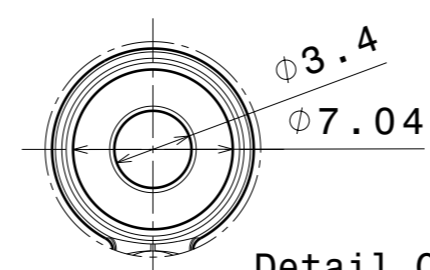
Isometric view
Scale: 3:2



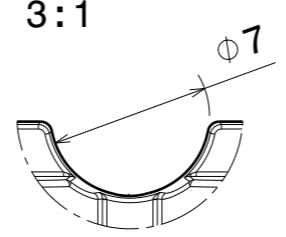
Bottom view
Scale: 2:1



Detail D
Scale: 3:1



Detail C
Scale: 3:1



Detail E
Scale: 3:1

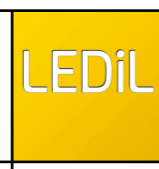
House side

Road side

Beam direction

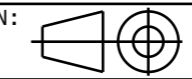
PART NO	MATERIAL
C16226_STRADELLA-8-HV-ME	PMMA

Tolerances if not otherwise shown
According to DIN ISO 2768-1
Linear measures:
Up to 30mm class F_M, otherwise see class M.
According to DIN ISO 2768-2
Form and position: class K
Control for SPC marked dimensions.



Ledil Oy
Salorankatu 10
FIN 24240 SALO
Finland

FIRST ANGLE PROJECTION:



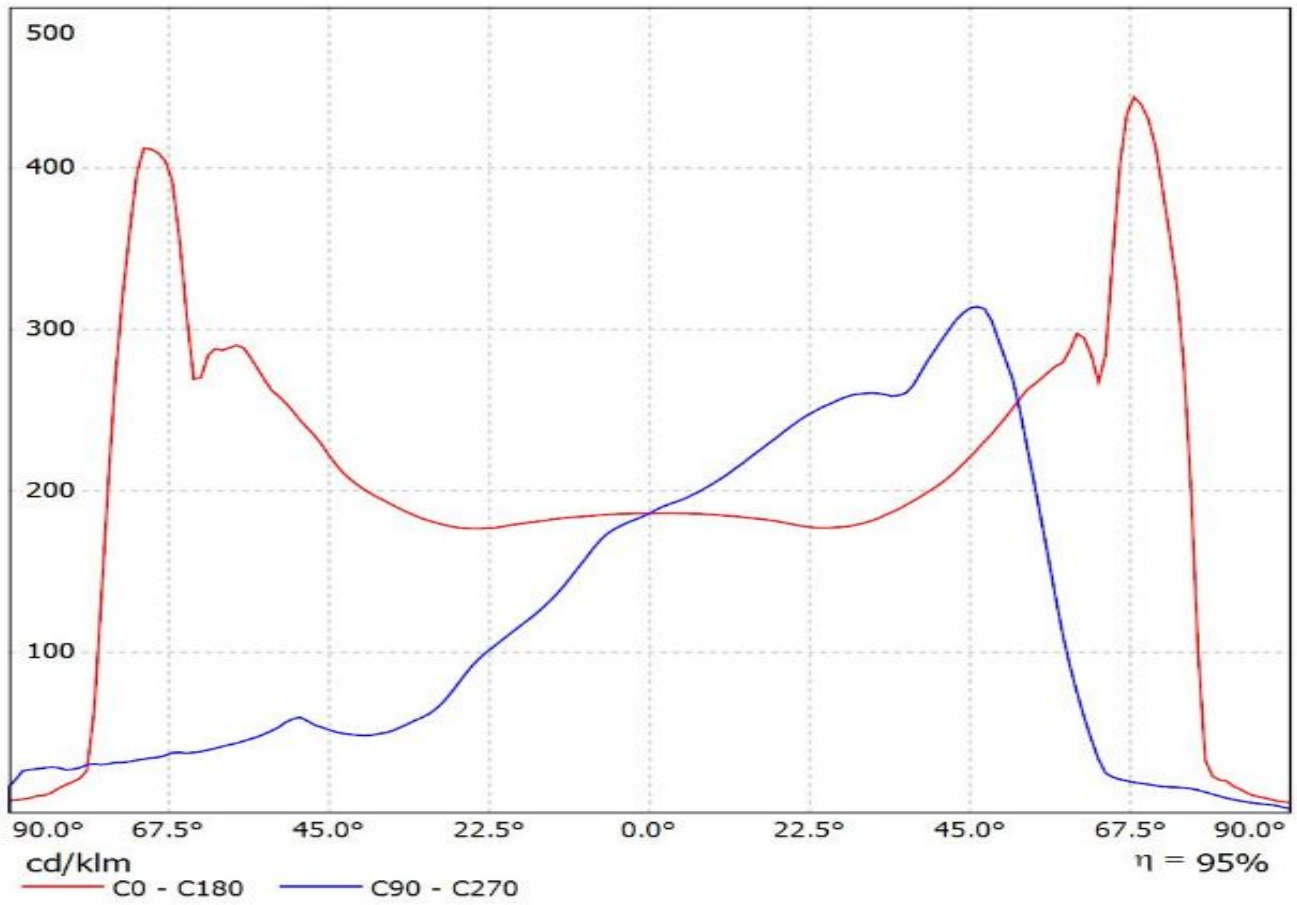
DRAWING TITLE
STRADELLA-8-HV-ME mechanical drawing

This drawing is the property of LEDiL Oy. It may not be reproduced, copied or communicated without a written agreement with LEDiL Oy.

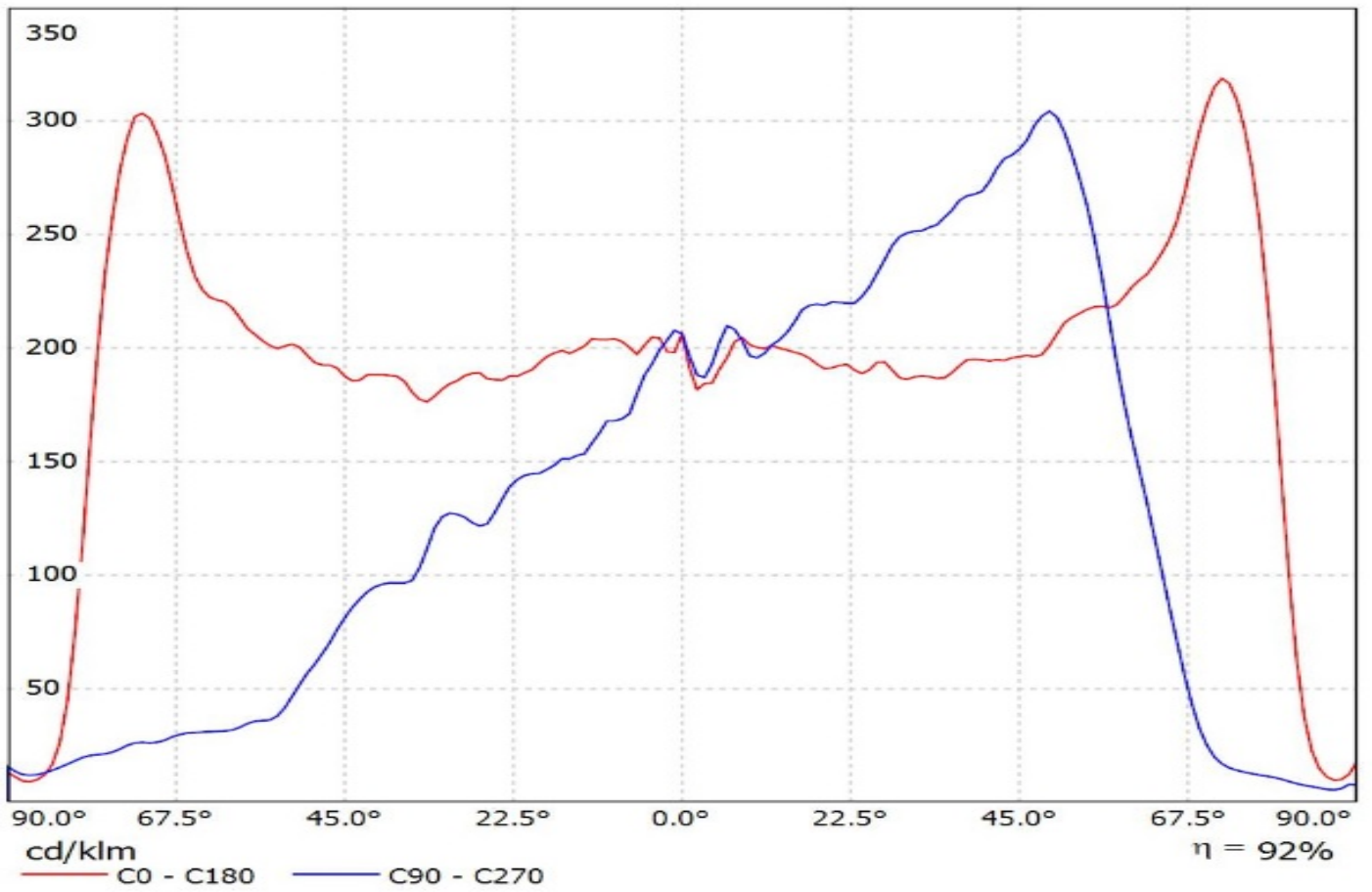
SIZE	PART NUMBER
A3	C16226

SCALE	3:2	WEIGHT	7,26 g	SHEET	1/1
-------	-----	--------	--------	-------	-----

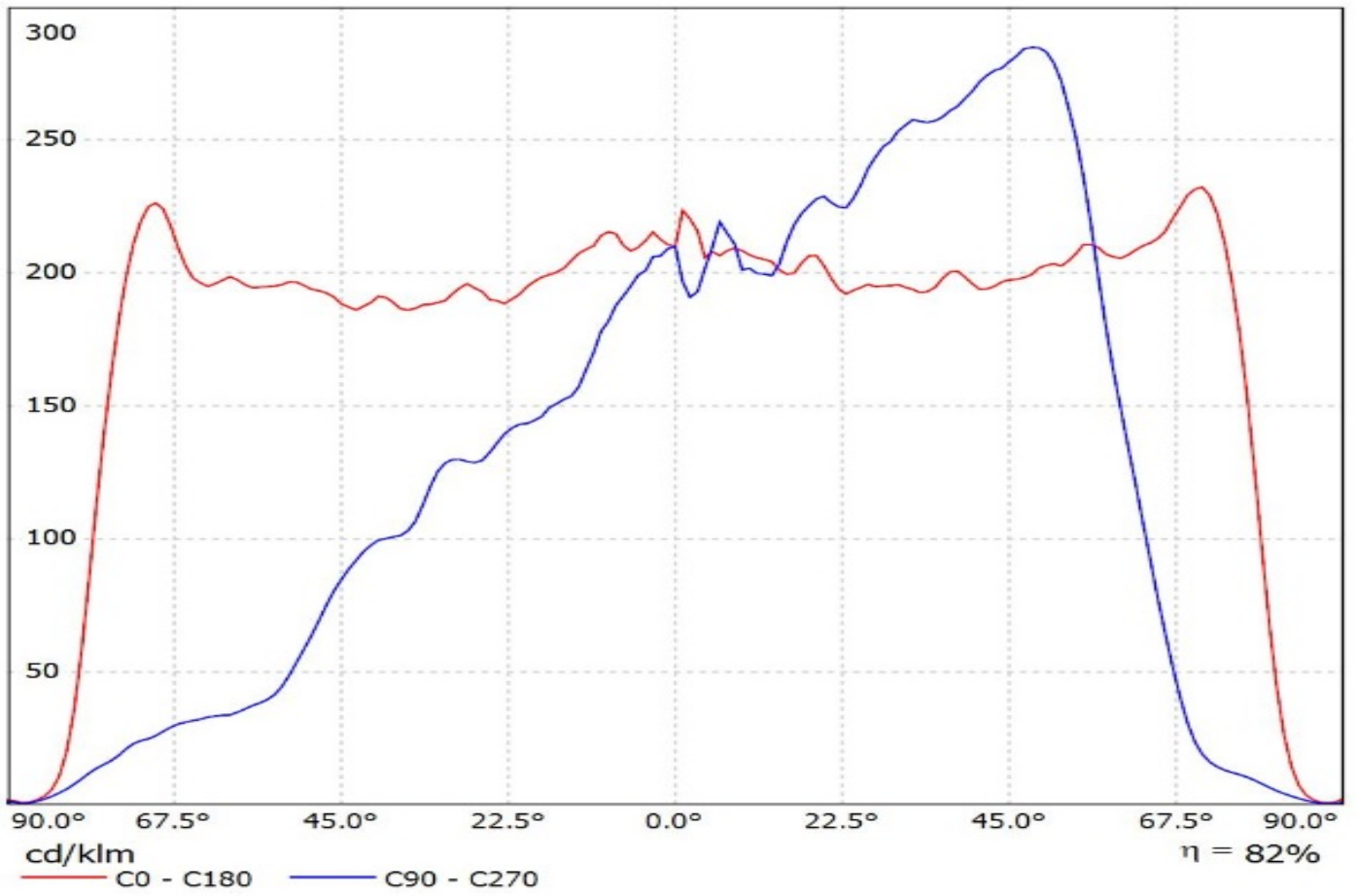
Luminaire: Ledil C16226_STRADELLA-8-HV-ME_(XD16)
Lamps: 1 x Cree_XD16_(XD16AWT-H-2B0-S20-0B-002)_903.058lm@250mA_CCT=5700K_P5.51704=W_I=0.250A



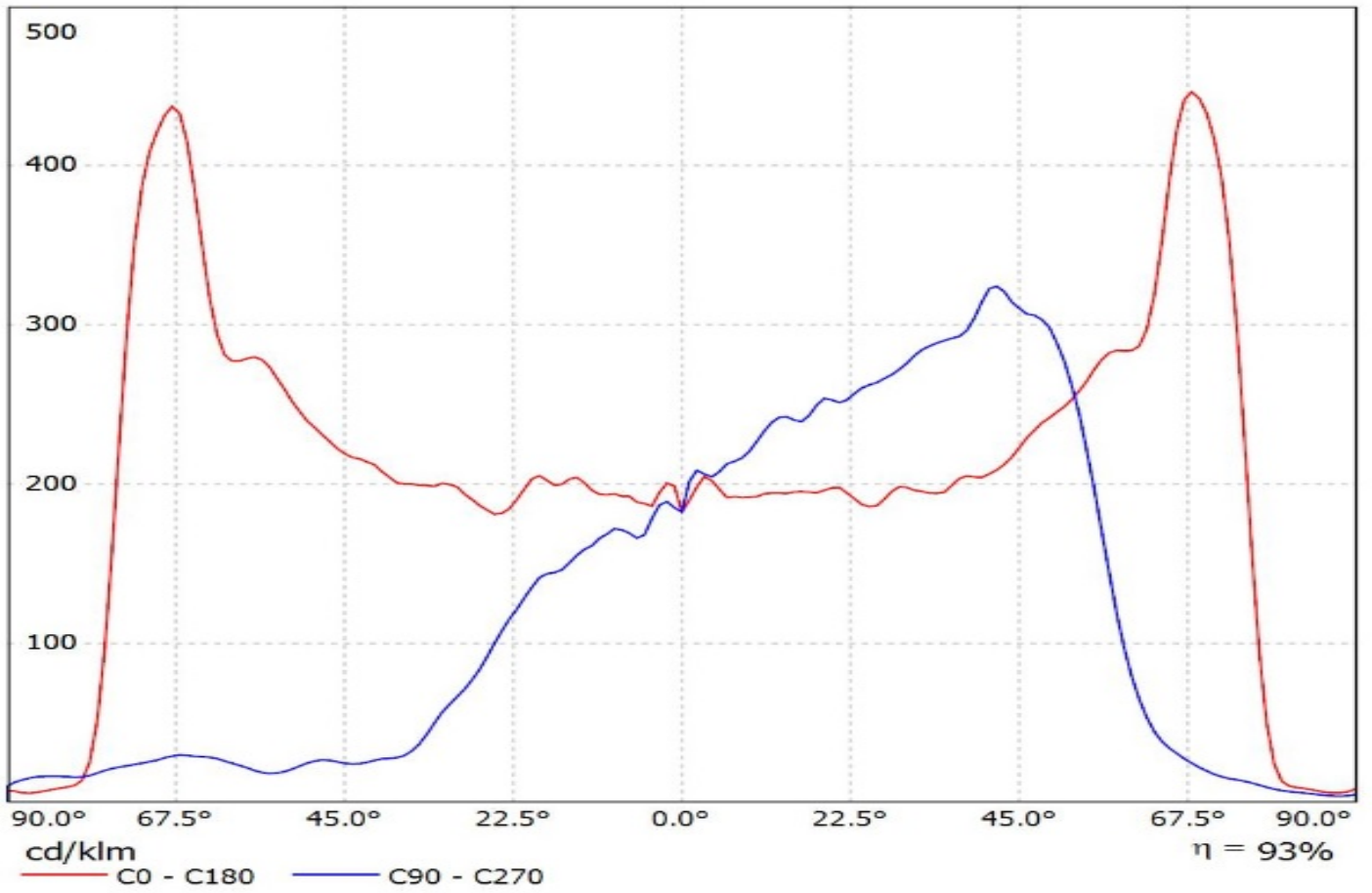
Luminaire: Ledil Oy C16226_STRADELLA-8-HV-ME_(NVSxx19C)_SIMULATED
Lamps: 1 x Nichia NVSL219C



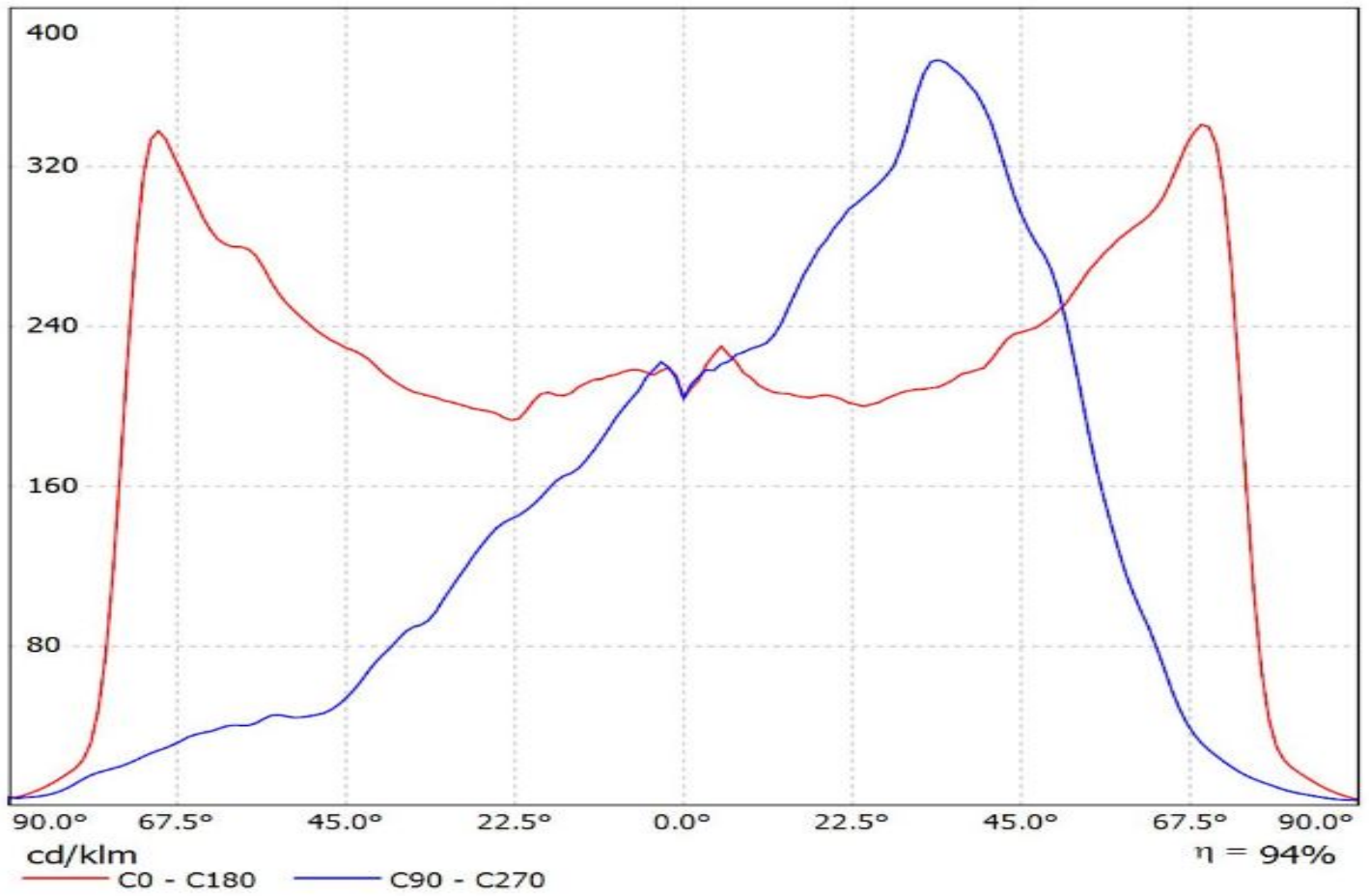
Luminaire: Ledil Oy C16226_STRADELLA-8-HV-ME_(NVSxx19C)_ (glass)_SIMULATED
Lamps: 1 x Nichia NVSL219C



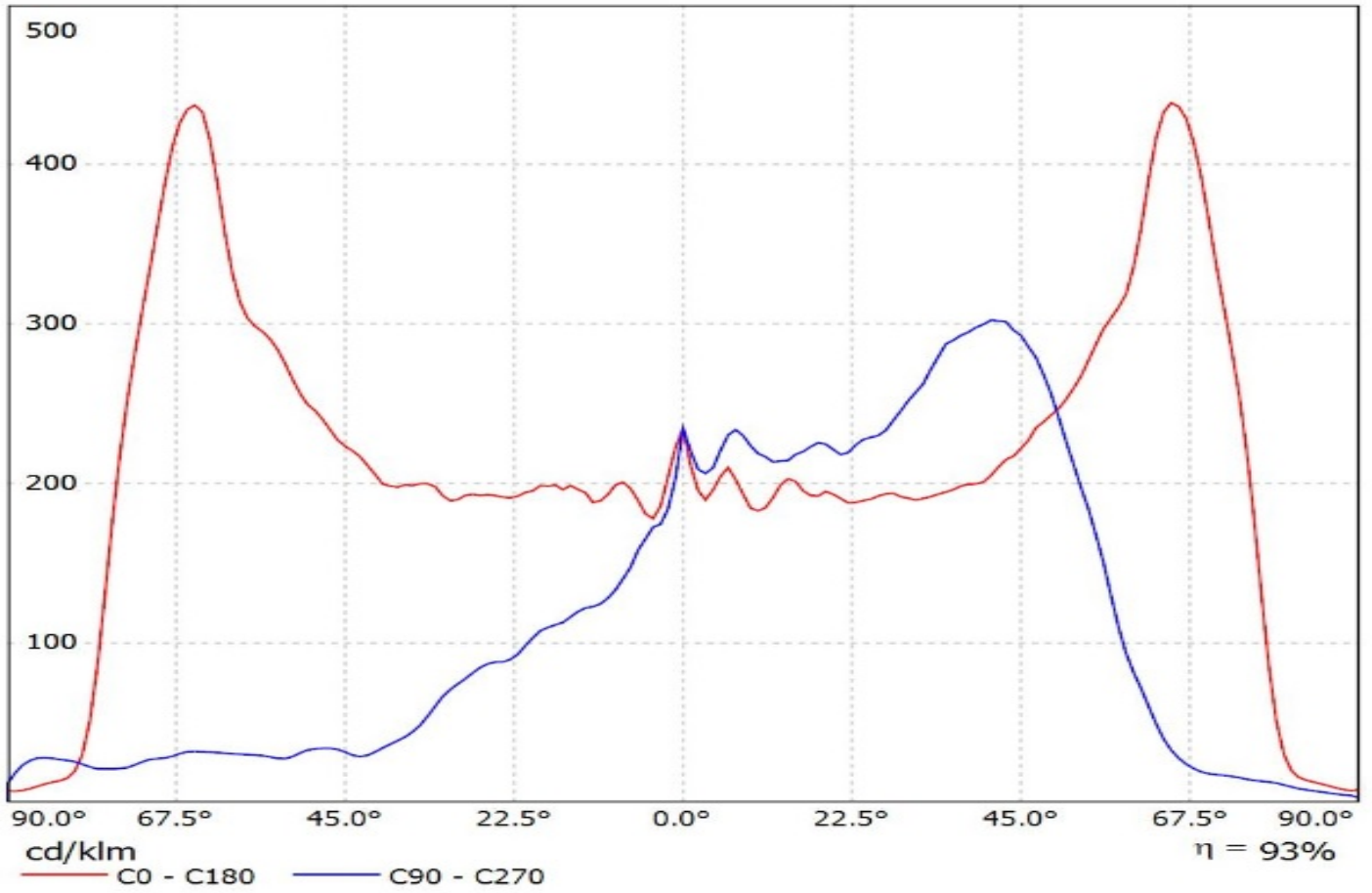
Luminaire: Ledil Oy C16226_STRADELLA-8-HV-ME_(NVSLE21A)_SIMULATED
Lamps: 1 x Nichia NVSLE21A



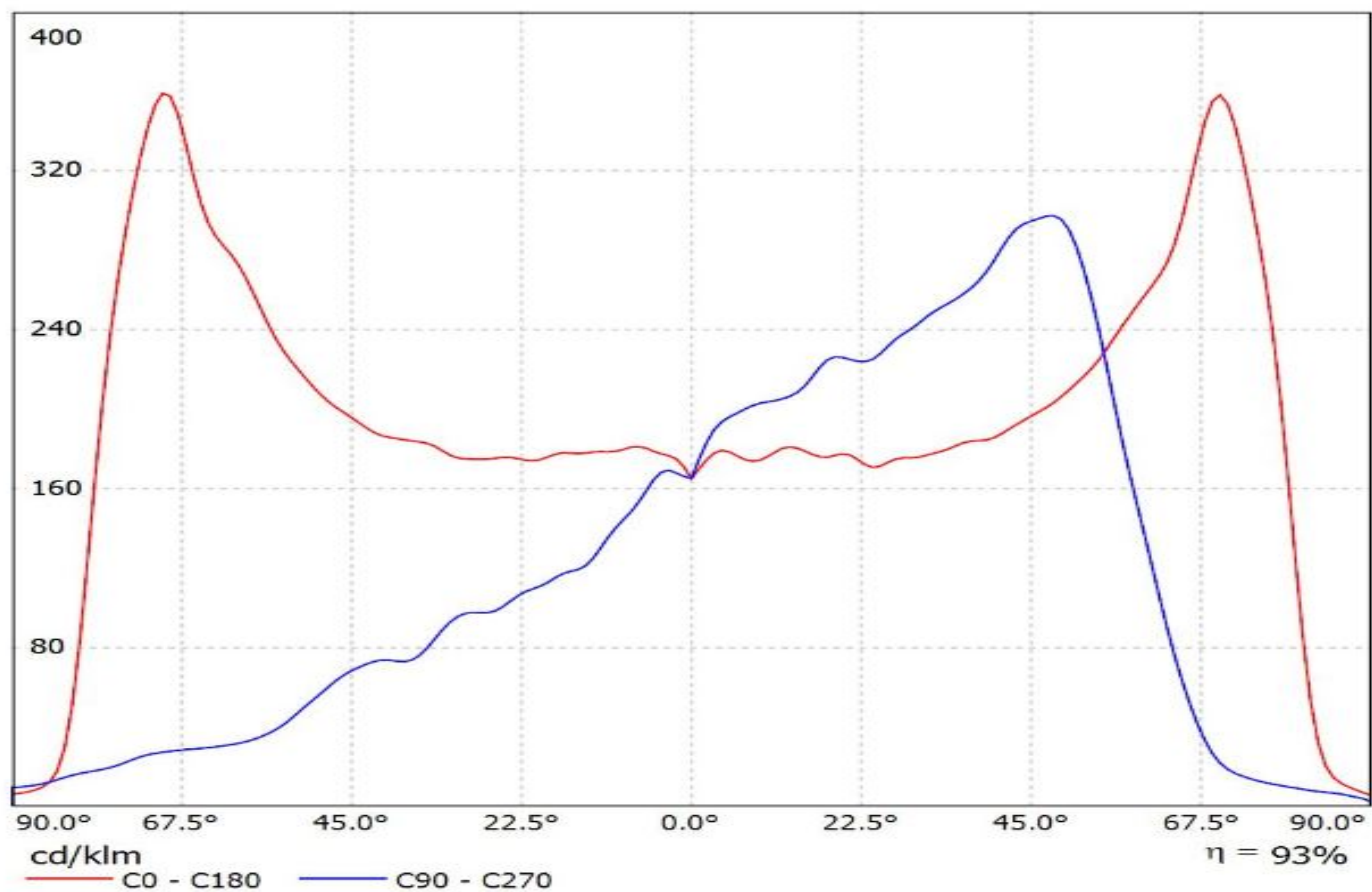
Luminaire: Ledil Oy C16226_STRADELLA-8-HV-ME_(Duris P8)_SIMULATED
Lamps: 1 x Osram Duris P8



Luminaire: Ledil Oy C16226_STRADELLA-8-HV-ME_(Z8Y22)_SIMULATED
Lamps: 1 x Seou Z8Y22

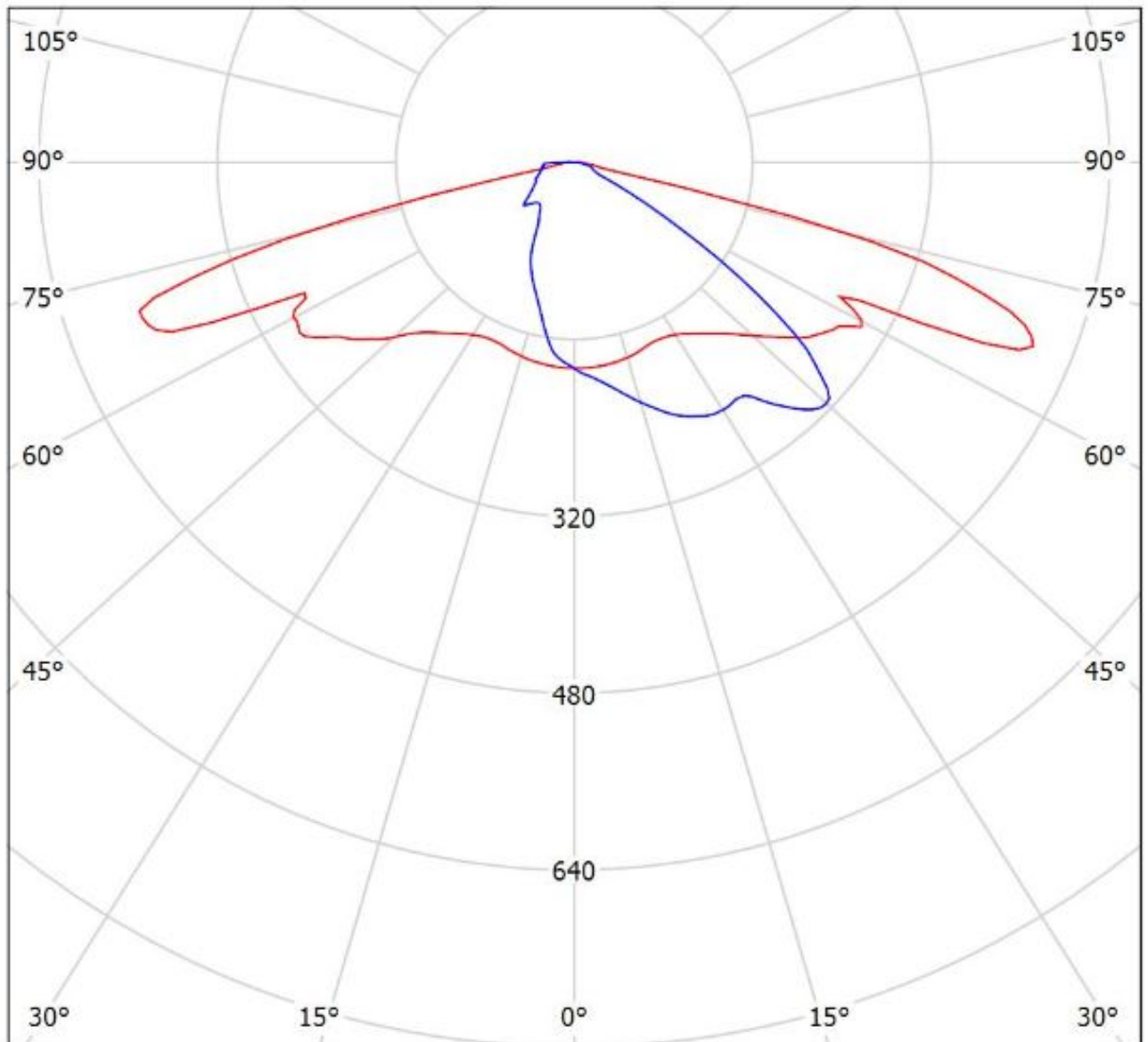


Luminaire: Ledil Oy C16226_STRADELLA-8-HV-ME_(SEOUL_Z8Y22P)_SIMULATED
Lamps: 1 x SEOUL_Z8Y22P



Luminaire: Ledil C16226_STRADELLA-8-HV-ME_(XD16)

Lamps: 1 x Cree_XD16_(XD16AWT-H-2B0-S20-0B-002)_903.058lm@250mA_CCT=5700K_P5.51704=W_I=0.250A

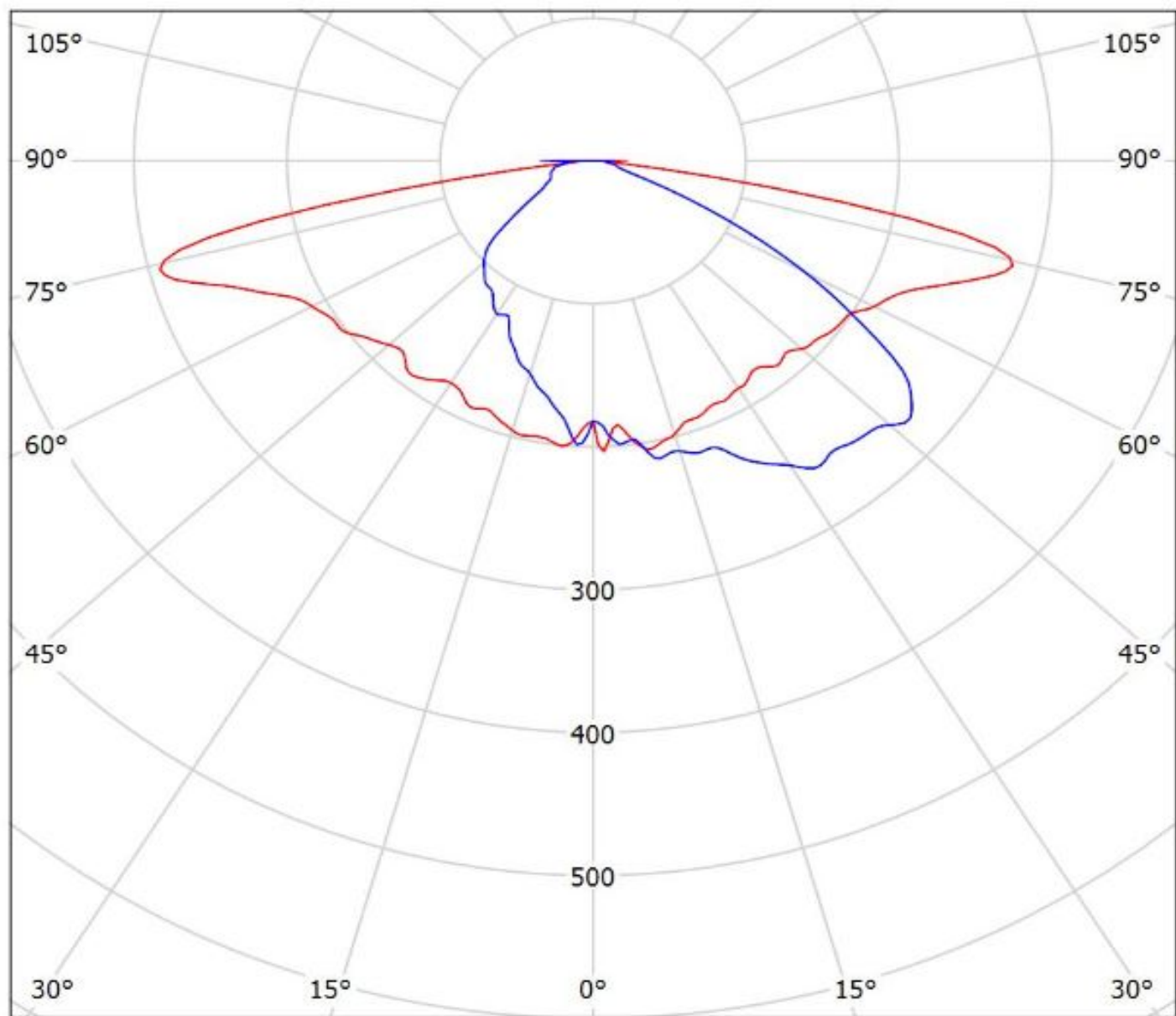


cd/klm
— C0 - C180 — C90 - C270

η = 95%

Luminaire: Ledil Oy C16226_STRADELLA-8-HV-ME_SIMULATED

Lamps: 1 x Cree_XP-G3

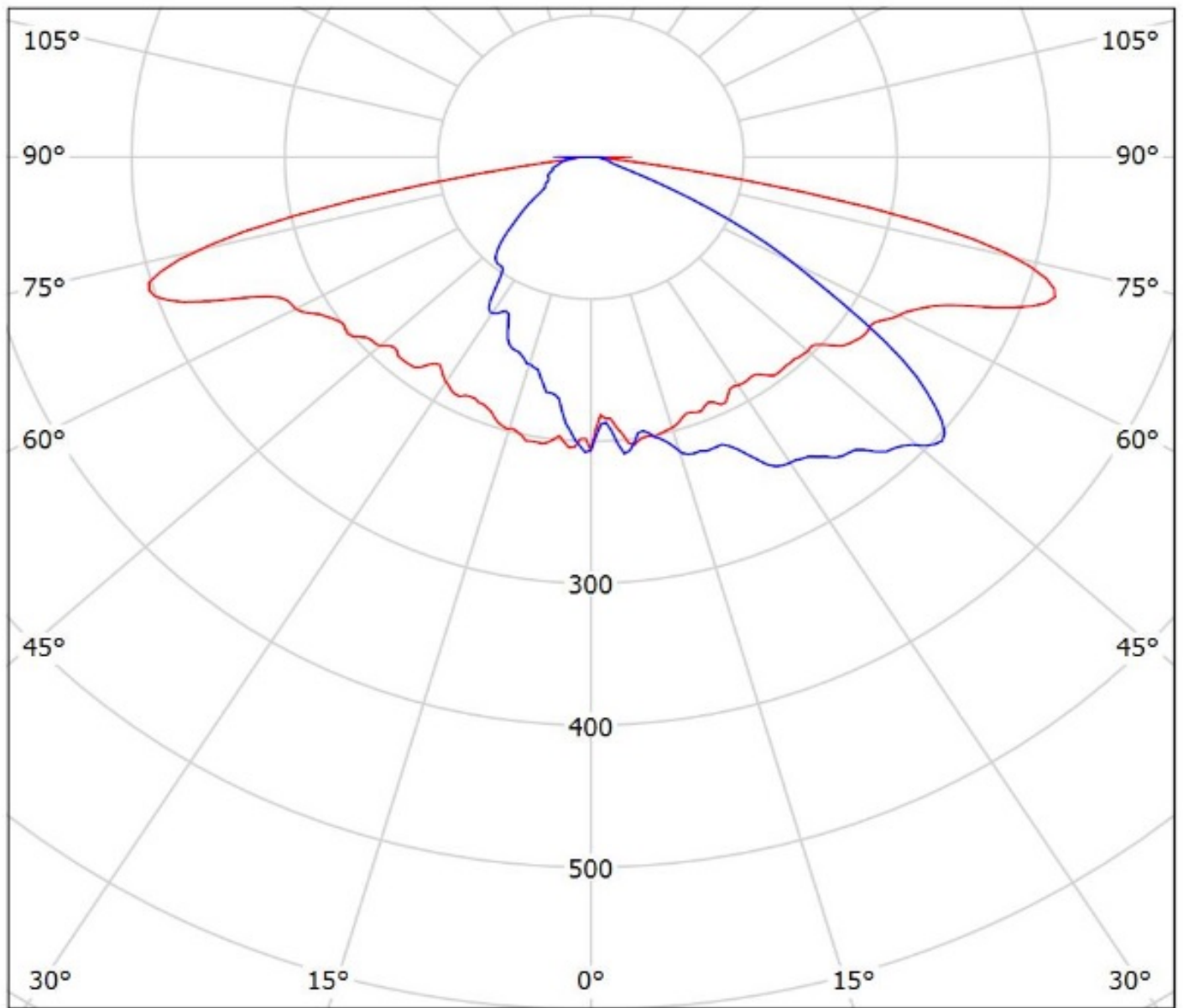


cd/klm

— C0 - C180 — C90 - C270

$\eta = 91\%$

Luminaire: Ledil Oy C16226_STRADELLA-8-HV-ME_(NVSxx19C)_SIMULATED
Lamps: 1 x Nichia NVSL219C

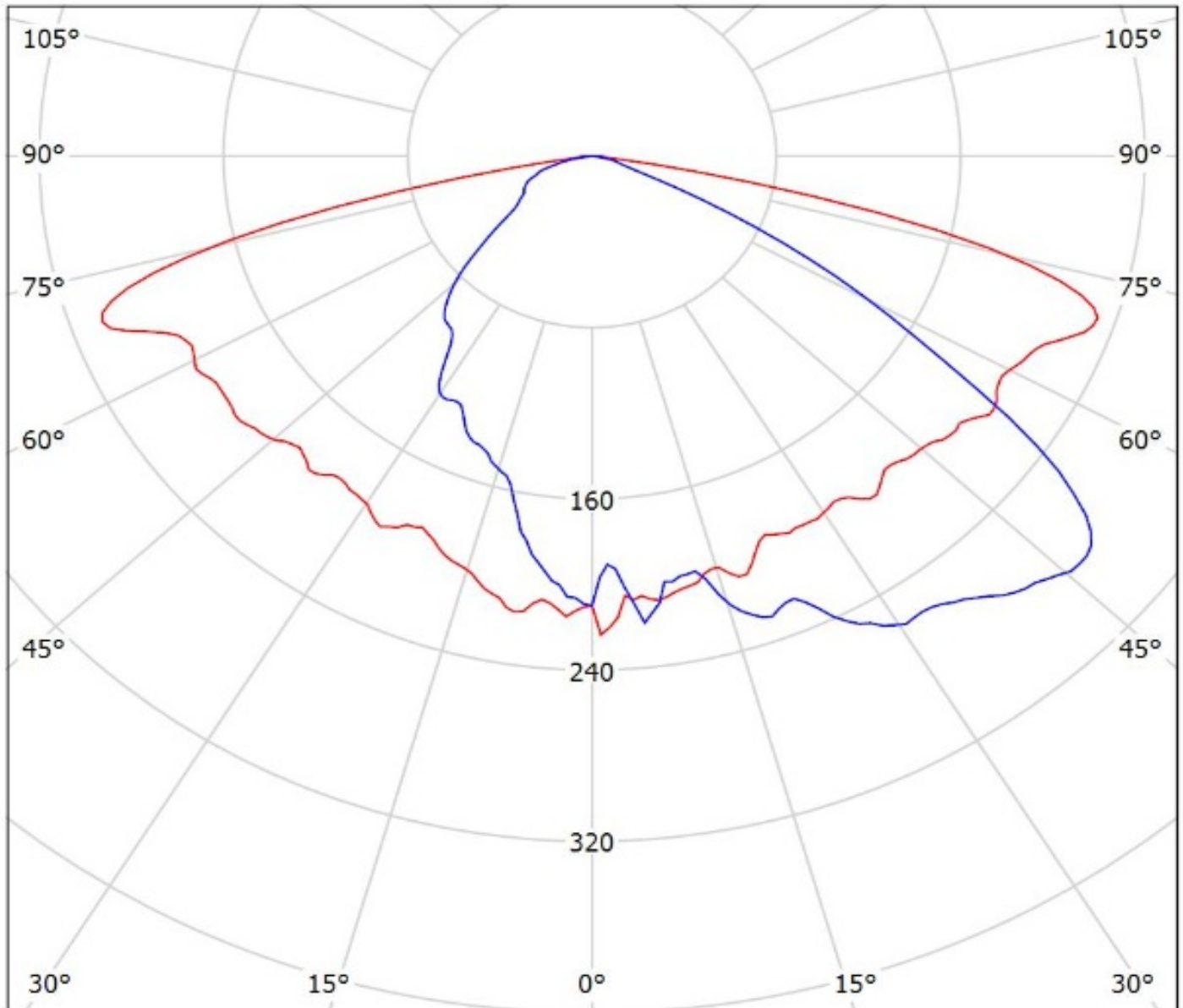


cd/klm

— C0 - C180 — C90 - C270

$\eta = 92\%$

Luminaire: Ledil Oy C16226_STRADELLA-8-HV-ME_(NVSxx19C)_(glass)_SIMULATED
Lamps: 1 x Nichia NVSL219C

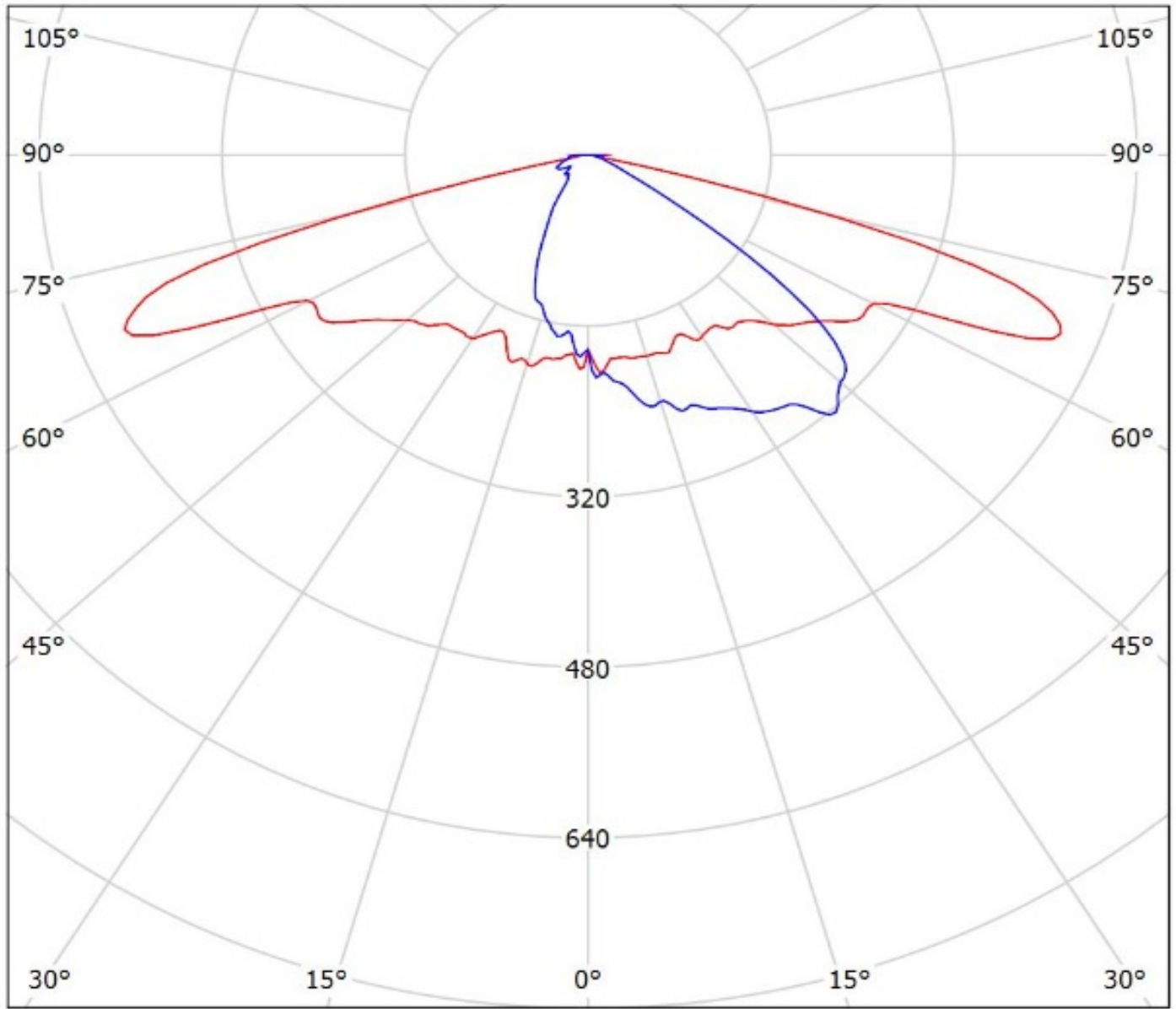


cd/klm

— C0 - C180 — C90 - C270

$\eta = 82\%$

Luminaire: Ledil Oy C16226_STRADELLA-8-HV-ME_(NVSLE21A)_SIMULATED
Lamps: 1 x Nichia NVSLE21A

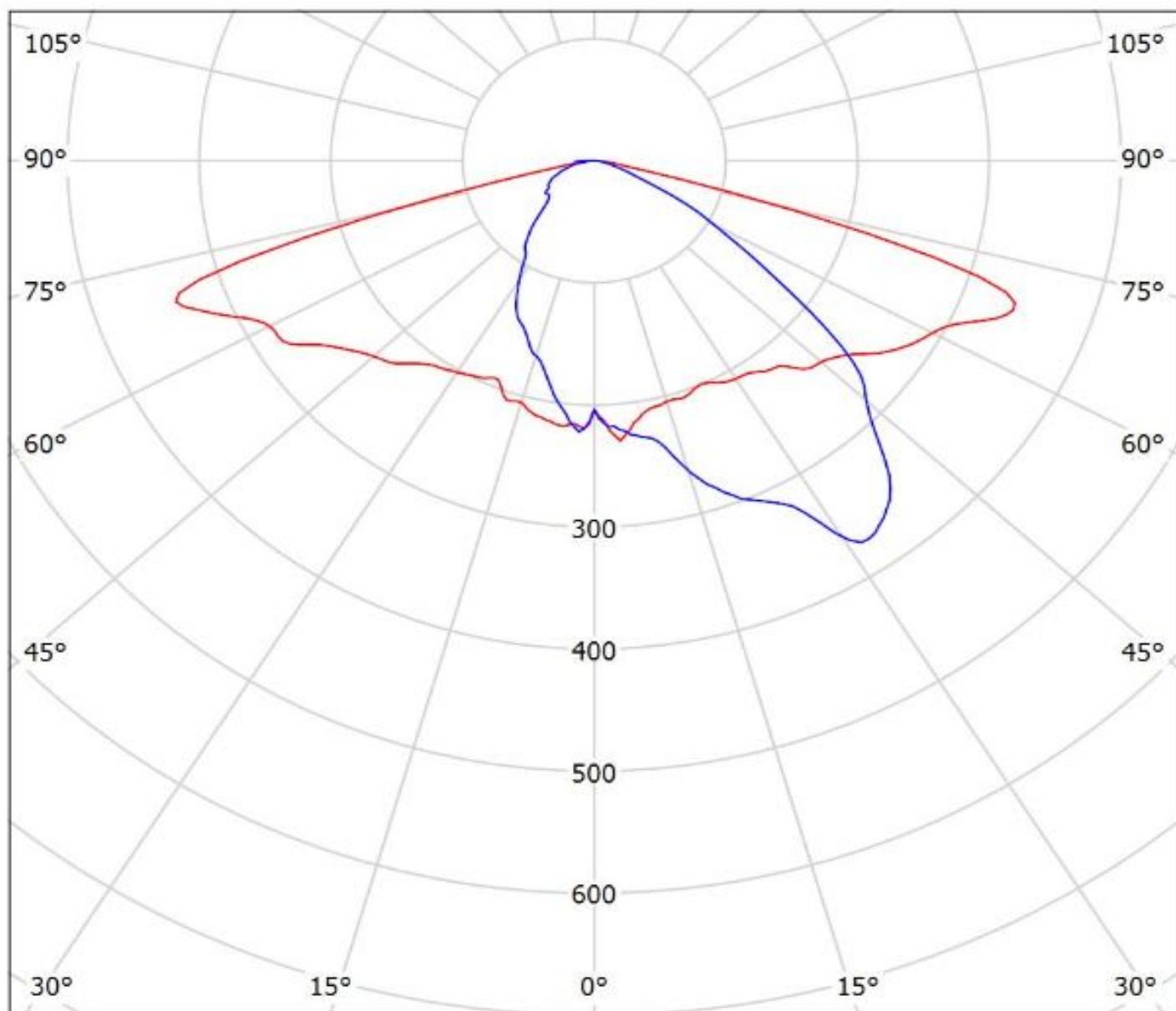


cd/klm

— C0 - C180 — C90 - C270

$\eta = 93\%$

Luminaire: Ledil Oy C16226_STRADELLA-8-HV-ME_(Duris P8)_SIMULATED
Lamps: 1 x Osram Duris P8

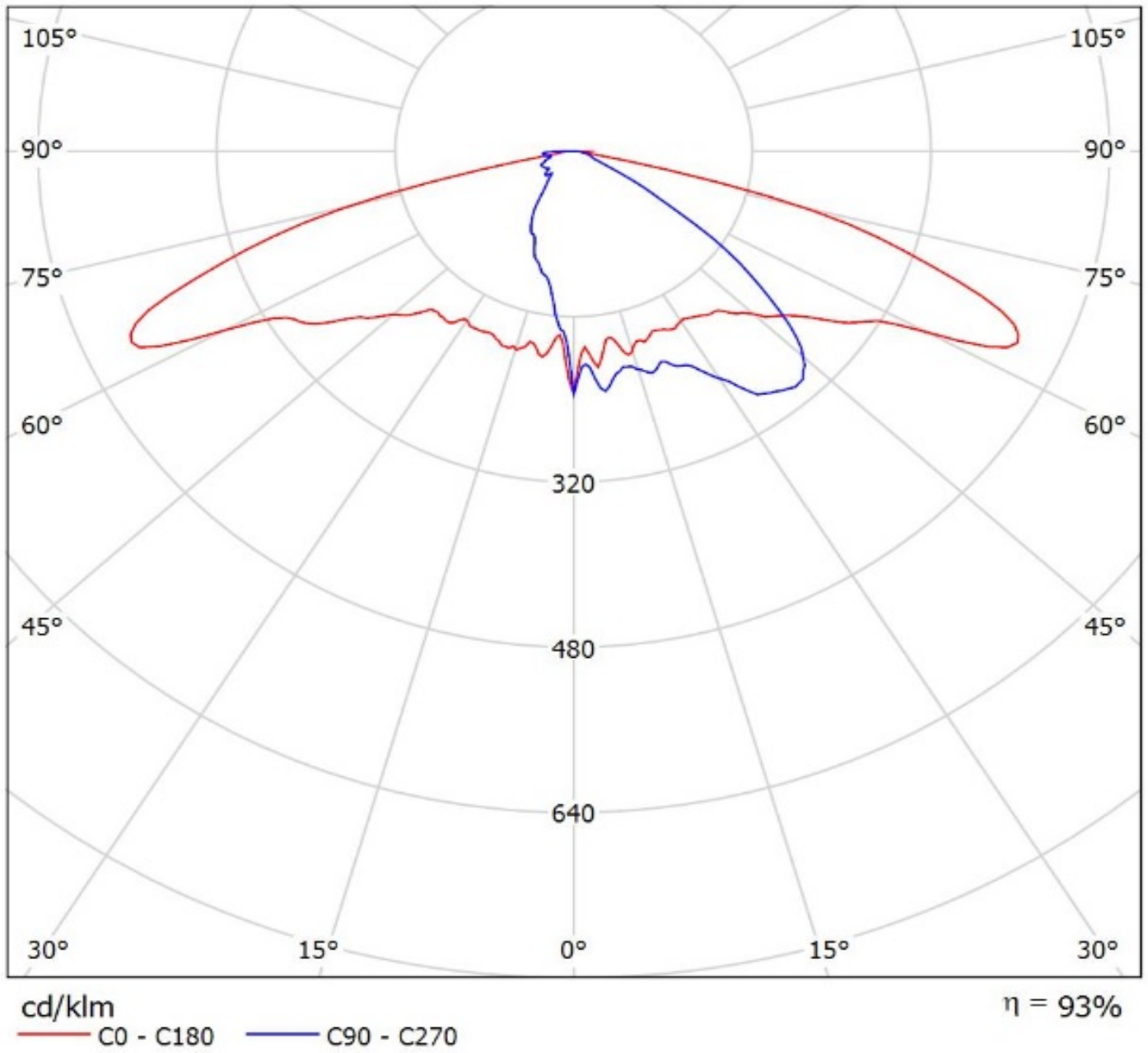


cd/klm

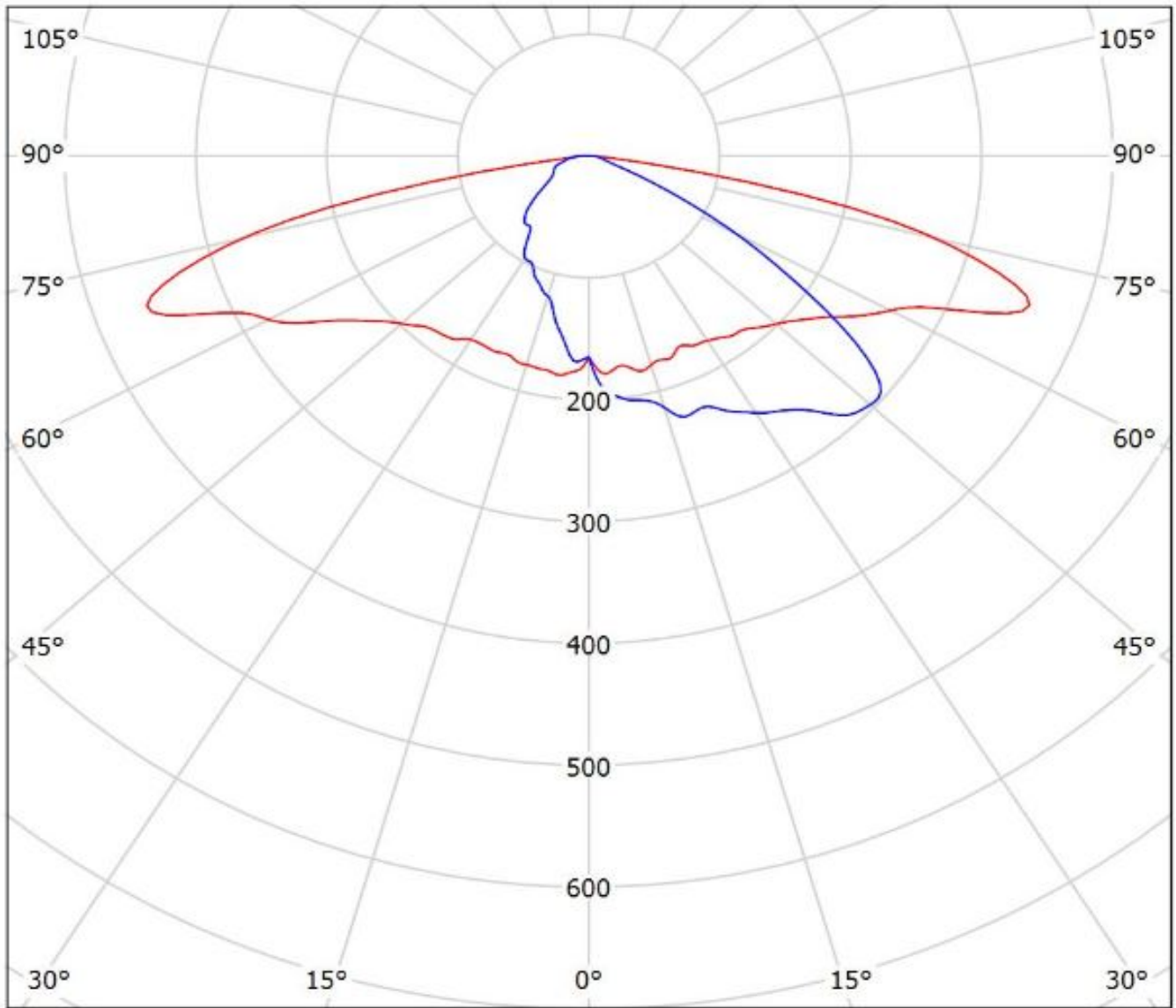
— C0 - C180 — C90 - C270

$\eta = 94\%$

Luminaire: Ledil Oy C16226_STRADELLA-8-HV-ME_(Z8Y22)_SIMULATED
Lamps: 1 x Seou Z8Y22



Luminaire: Ledil Oy C16226_STRADELLA-8-HV-ME_(SEOUL_Z8Y22P)_SIMULATED
Lamps: 1 x SEOUL_Z8Y22P



cd/klm
— C0 - C180 — C90 - C270

$\eta = 93\%$

NOTE: The typical divergence will be changed by different color, chip size and chip position tolerance. The typical total divergence is the full angle measured where the luminous intensity is half of the peak value.