

REV.	DESCRIPTION	DRAWN	CHECKED	APPROVED
A	NEW RELEASE	LJC 07/20/12'		LJC 07/20/12'
B	ADD Pin Length A	JLZ 09/01/14'		LJC 09/01/14'
C	DRAWING UPDATE	JLZ 02/24/17'		

NOTES:

- 1.Materials:**
 1.1. Insulator: High Temperature 260°C,UL94-V0
 (For White Only UL94-HB Rated).RoHS,REACH compliance.
 1.2. Pin: Copper Alloy, Plating Tin or Gold.
 1.3. Clip: Beryllium Copper, C17200,Full Gold plating.
- 2.Specifications:**
 2.1. Temperature Range: -55~+125°C.
 2.2. Contact Resistance: 10mΩ maximum.
 2.3. Insulation Resistance: 1000MΩ minimum.
 2.4. Dielectric Withstanding Voltage: 500V AC 1 minute.
 2.5. Voltage Rating: 24V AC/DC.
 2.6. Current Rating: 3A max per pin.
 2.7. Application insert pin: $\varnothing 0.381\sim\varnothing 0.635\text{mm}$.
 2.8. Resistance to soldering heat: 260°C,3-5seconds.
 2.9. Durability: 1000 cycles min.
- 3. Product Number Code:**

DS1137-02 - X X X X X X X

- Pin Length DIM A(For Male Only) ②
- N/A: DIM A=2.65
- 1.50: DIM A=1.50
- Packing Type
- R: Tape On Reel.
- Clip plating(Female Only)
- 8: Full gold flash.
- C: Full 3u" gold.
- Pin plating
- 6: Full tin.
- 8: Full gold flash.
- Housing Color
- W: White
- B: Black
- V: Ivory
- Connector Type
- F: Female
- M: Male
- No. of positions
- 2: 2p ~ 5: 5p

CONNFLY

Tel:86-574-92508787
 Fax:86-574-63510817
 E-mail:sale@connfly.com
 http://www.connfly.com
 Add:East Industry Zone KuangYan
 Town Cixi Ningbo China
 P.C:315333

Female

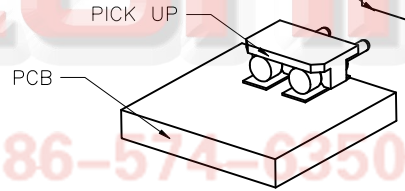
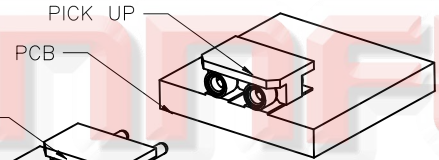
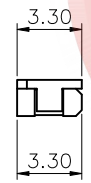
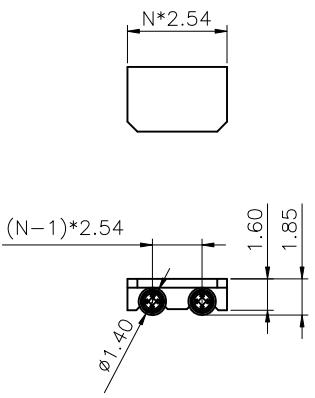
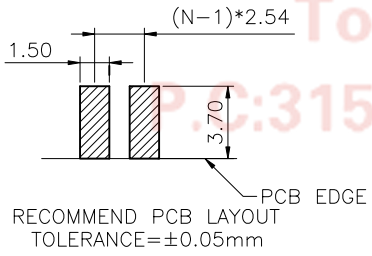
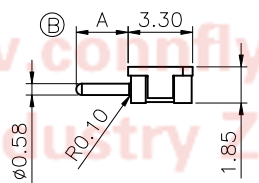
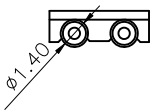
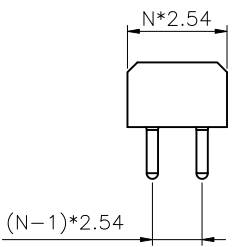


Figure of PCB Mounting



Male

GENERAL TOLERANCE		ANGLE TOLERANCE	
X.	±0.60	X.	±5°
.X	±0.38	.X	±3°
.XX	±0.25	.XX	±2°

DRAWING TYPE	CUSTOMER		
SCALE	1:1	SHEET	1 OF 1
DRAWING NO.	C-DS1137-02-XXXXXX-C		

PROJECTION	TITLE
	2.54mm LED Series Plug & Socket
UNITS	mm
SHEET SIZE	A4
SERIES	DS1137-02 SERIES

晨翔电子有限公司
CONNFLY CONNFLY ELECTRONIC CO., LTD