

DAISY-7X1-FT-D

Forward throwing beam for freestanding office luminaires. Choose SHD with no lips or SHD2 with narrow lips and square openings. SHD3 with narrow lips and round openings.

SPECIFICATION:

Dimensions	40.0 x 259.0
Height	20.3 mm
Fastening	pin, screw
ROHS compliant	yes ⓘ



MATERIALS:

Component	Type	Material	Colour	Finish	Length (mm)
DAISY-7X1-FT-D	Linear lens	PMMA	milky		
DAISY-7X1-SHD2-MET-MATT	Shade	PC-ABS	metal	matt	
DAISY-7X1-SHD2-MET	Shade	PC	metal	gloss	
DAISY-7X1-SHD2-MATT-WHT	Shade	PC	white	matt	
DAISY-7X1-SHD2-WHT	Shade	PC	white	gloss	
DAISY-7X1-SHD2-MATT	Shade	PC-ABS	black	matt	
DAISY-7X1-SHD2	Shade	PC	black	gloss	
DAISY-7X1-SHD3-MATT-GLD	Shade	PC	gold	matt	
DAISY-7X1-SHD3-MATT-RED	Shade	PC	red	matt	
DAISY-7X1-SHD3-MATT-GR	Shade	PC	grey	matt	
DAISY-7X1-SHD-MATT-GLD	Shade	PC	gold	matt	
DAISY-7X1-SHD-MATT-GR	Shade	PC	grey	matt	
DAISY-7X1-SHD-MATT-RED	Shade	PC	red	matt	
DAISY-7X1-SHD3-MET-MATT	Shade	PC	metal	matt	
DAISY-7X1-SHD3-MET	Shade	PC	metal	gloss	
DAISY-7X1-SHD3-WHT-MATT	Shade	PC	white	matt	
DAISY-7X1-SHD3-WHT	Shade	PC	white	gloss	

DAISY-7X1-SHD	Shade	PC	black	gloss
DAISY-7X1-SHD-MET-MATT	Shade	PC	metal	matt
DAISY-7X1-SHD-MET	Shade	PC	metal	gloss
DAISY-7X1-SHD-WHT-MATT	Shade	PC	white	matt
DAISY-7X1-SHD-MATT	Shade	PC	black	matt
DAISY-7X1-SHD-WHT	Shade	PC	white	gloss
DAISY-7X1-SHD	Shade	PC	black	gloss

ORDERING INFORMATION:

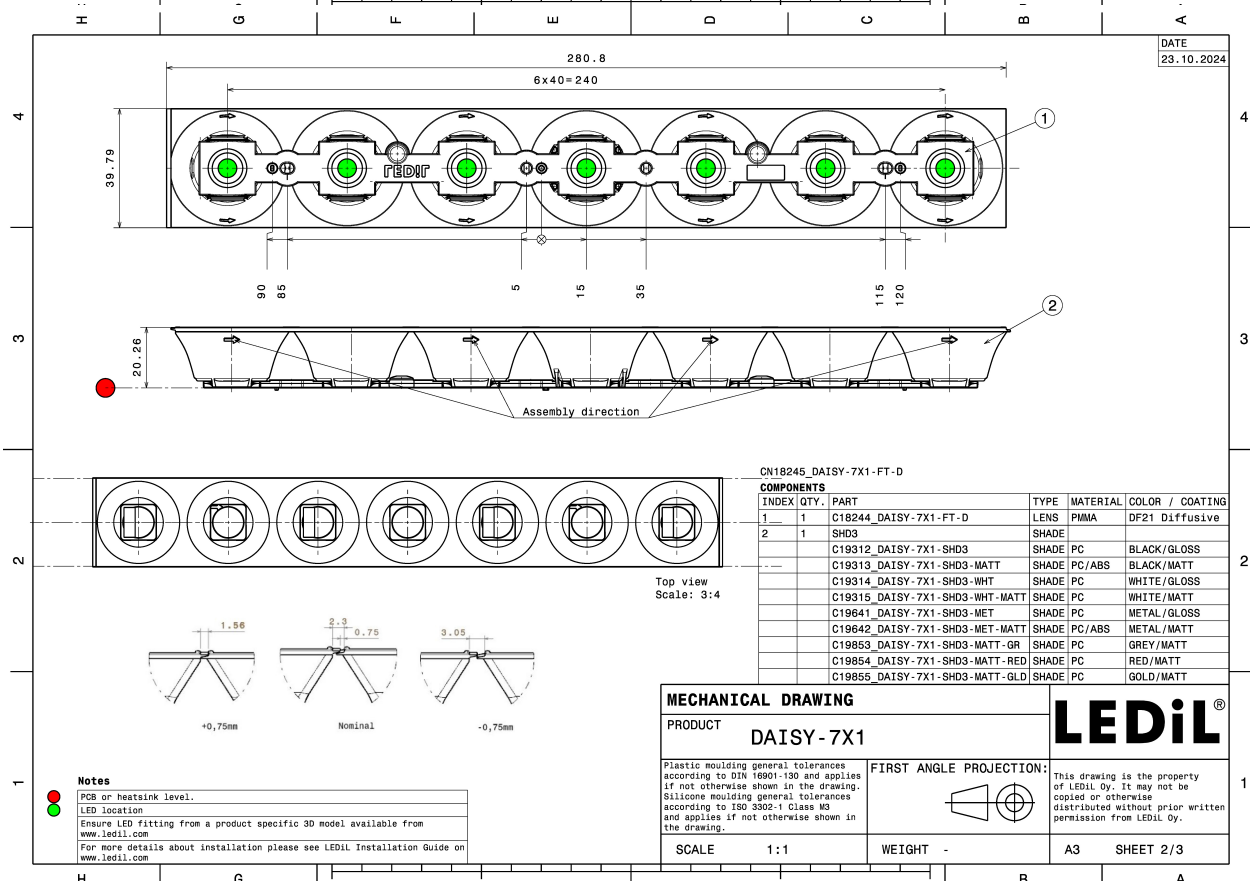
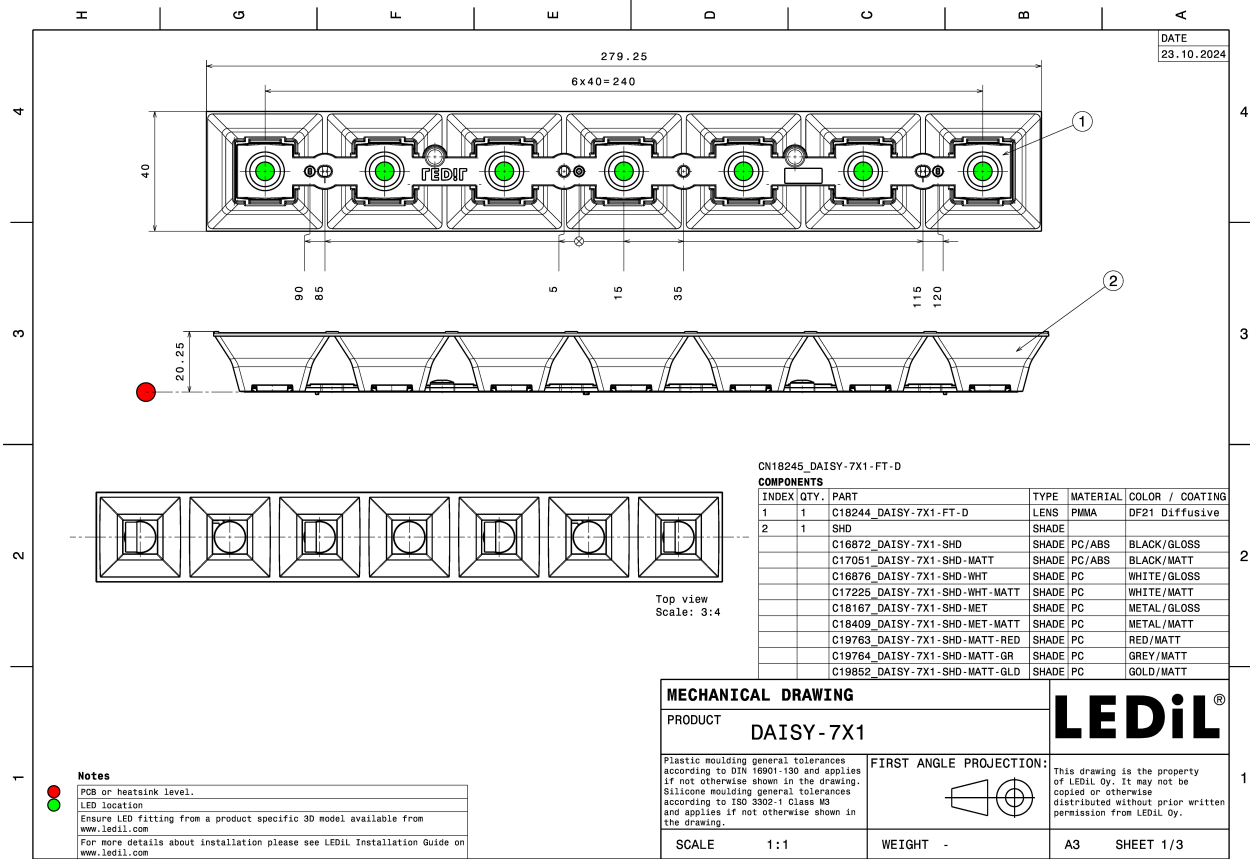
Quantities for one set:

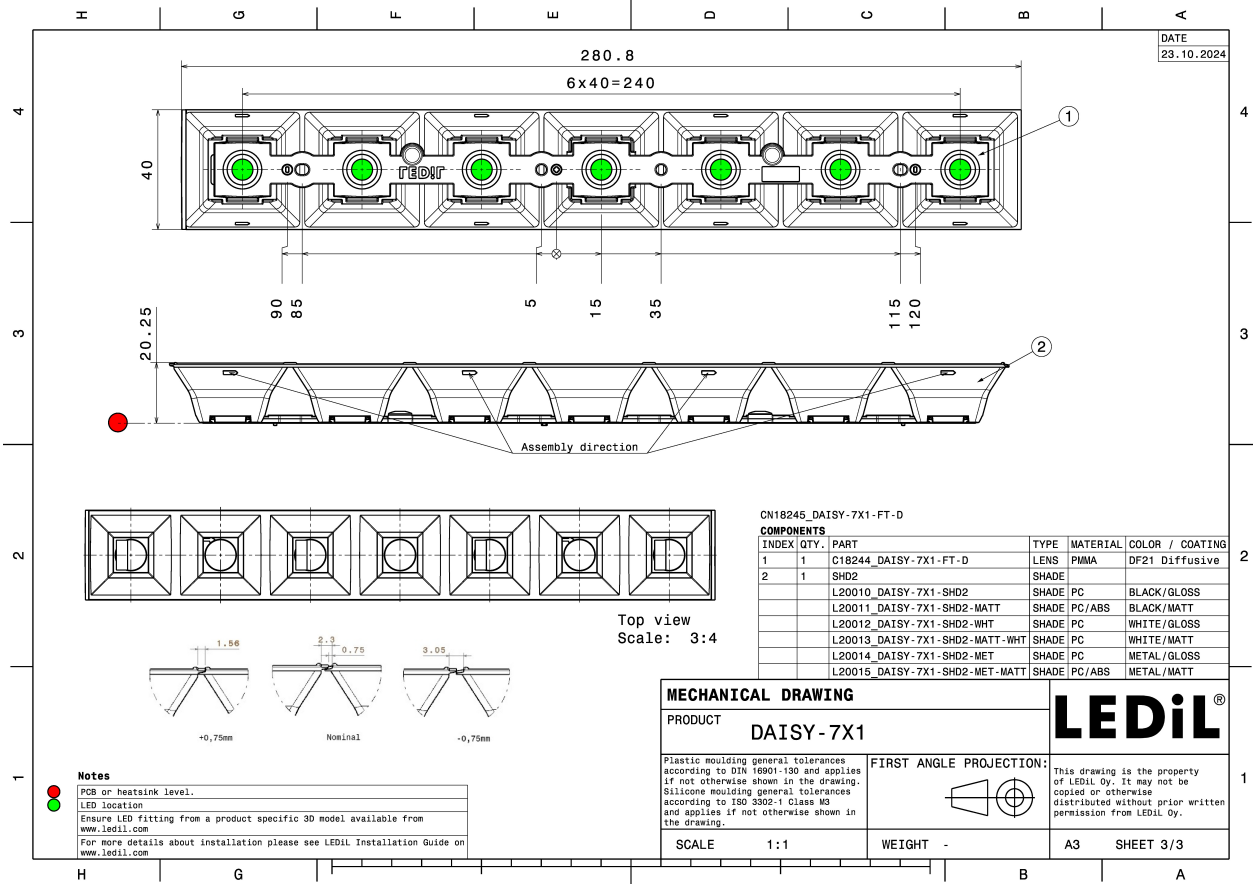
Linear lens 1

Shade 1

Component		Qty in box	MOQ	MPQ	Box weight (kg)
C18244_DAISY-7X1-FT-D	Linear lens	312	312	24	5.6
» Box size: 400 x 300 x 300 mm					
L20011_DAISY-7X1-SHD2-MATT	Shade	156	312	24	6.7
» Box size: 595 x 360 x 230 mm					
C19641_DAISY-7X1-SHD3-MET	Shade	156	312	24	6.1
» Box size: 595 x 360 x 230 mm					
C17051_DAISY-7X1-SHD-MATT	Shade	156	312	24	7.3
» Box size: 595 x 360 x 230 mm					
C19853_DAISY-7X1-SHD3-MATT-GR	Shade	156	312	24	7.1
» Box size: 595 x 360 x 230 mm					
C19312_DAISY-7X1-SHD3	Shade	156	312	24	6.1
» Box size: 595 x 360 x 230 mm					
L20012_DAISY-7X1-SHD2-WHT	Shade	156	312	24	7.2
» Box size: 595 x 360 x 230 mm					
C19642_DAISY-7X1-SHD3-MET-MATT	Shade	156	312	24	5.7
» Box size: 595 x 360 x 230 mm					
C17225_DAISY-7X1-SHD-WHT-MATT	Shade	156	312	24	7.6
» Box size: 595 x 360 x 230 mm					
C19854_DAISY-7X1-SHD3-MATT-RED	Shade	156	312	24	6.2
» Box size: 595 x 360 x 230 mm					
C19313_DAISY-7X1-SHD3-MATT	Shade	156	312	24	5.8
» Box size: 595 x 360 x 230 mm					
L20013_DAISY-7X1-SHD2-MATT-WHT	Shade	156	312	24	7.1
» Box size: 595 x 360 x 230 mm					
C19763_DAISY-7X1-SHD-MATT-RED	Shade	156	312	24	7.1
» Box size: 595 x 360 x 230 mm					
C18167_DAISY-7X1-SHD-MET	Shade	156	312	24	7.0
» Box size: 595 x 360 x 230 mm					
C19855_DAISY-7X1-SHD3-MATT-GLD	Shade	156	312	24	6.2
» Box size: 595 x 360 x 230 mm					
C19314_DAISY-7X1-SHD3-WHT	Shade	156	312	24	6.3
» Box size: 595 x 360 x 230 mm					
C16872_DAISY-7X1-SHD	Shade	156	312	24	7.1
» Box size: 595 x 360 x 230 mm					
L20014_DAISY-7X1-SHD2-MET	Shade	156	312	24	7.0
» Box size: 595 x 360 x 230 mm					
C19764_DAISY-7X1-SHD-MATT-GR	Shade	156	312	24	5.7
» Box size: 595 x 360 x 230 mm					

C19315_DAISY-7X1-SHD3-WHT-MATT » Box size: 595 x 360 x 230 mm	Shade	156	312	24	6.2
C16876_DAISY-7X1-SHD-WHT » Box size: 595 x 360 x 230 mm	Shade	156	312	24	7.6
L20015_DAISY-7X1-SHD2-MET-MATT » Box size: 595 x 360 x 230 mm	Shade	156	312	24	6.8
C19852_DAISY-7X1-SHD-MATT-GLD » Box size: 595 x 360 x 230 mm	Shade	156	312	24	7.1
C18409_DAISY-7X1-SHD-MET-MATT » Box size: 595 x 360 x 230 mm	Shade	156	312	24	7.0



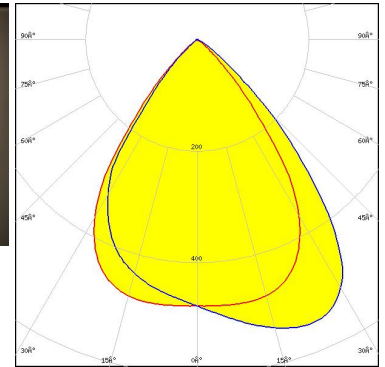
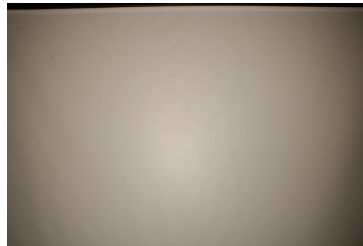


See also our general installation guide: www.ledil.com/installation_guide

OPTICAL RESULTS (MEASURED):

inventronics

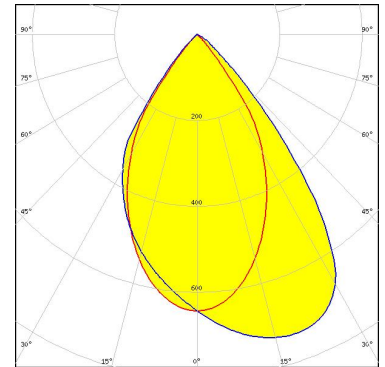
LED PL-LIN-2000 280x24mm
FWHM / FWTM Asymmetric
Efficiency 71 %
Peak intensity 0.6 cd/lm
LEDs/each optic 4
Light colour/type White
Required components:
C17051_DAISY-7X1-SHD-MATT



Light distribution files

LUMILEDS

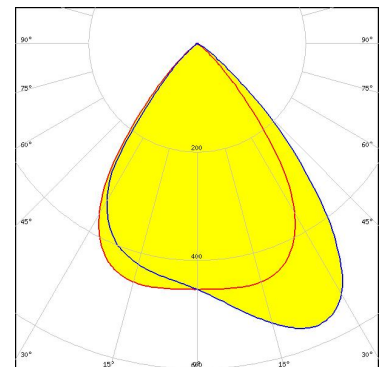
LED LUXEON HL2Z
FWHM / FWTM Asymmetric
Efficiency 75 %
Peak intensity 0.7 cd/lm
LEDs/each optic 2
Light colour/type White
Required components:
C17051_DAISY-7X1-SHD-MATT



Light distribution files

MST | Your solutions

LED LinLED 280x28mm 1100lm 8x0 2C 42V DAISY-7X1 G1
FWHM / FWTM Asymmetric
Efficiency 72 %
Peak intensity 0.6 cd/lm
LEDs/each optic 4
Light colour/type White
Required components:
C16872_DAISY-7X1-SHD

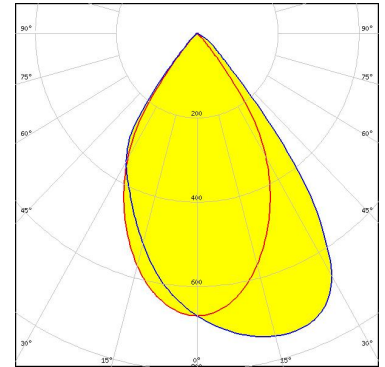


Light distribution files

OPTICAL RESULTS (MEASURED):

MST | *Your solutions*

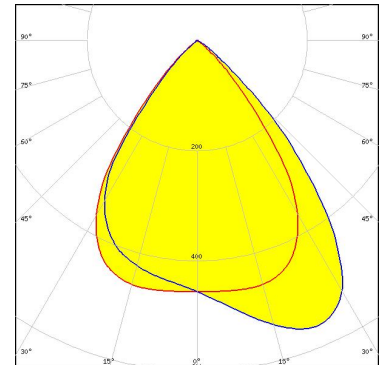
LED LinLED 280x28mm 1600lm 840 4C 21V DAISY 7x1(ZT25)
 FWHM / FWTM Asymmetric
 Efficiency 75 %
 Peak intensity 0.7 cd/lm
 LEDs/each optic 1
 Light colour/type White
 Required components:
 C16872_DAISY-7X1-SHD



Light distribution files

MST | *Your solutions*

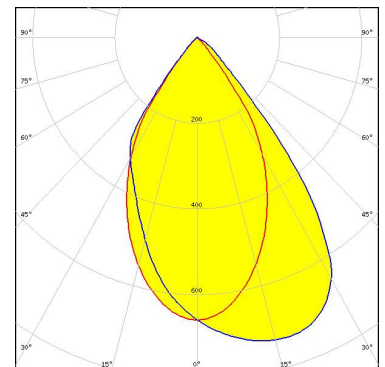
LED LinLED 280x28mm 2x550lm 827-865 2x2C 42V DAISY-7X1 G1
 FWHM / FWTM Asymmetric
 Efficiency 72 %
 Peak intensity 0.6 cd/lm
 LEDs/each optic 4
 Light colour/type Tunable White
 Required components:
 C16872_DAISY-7X1-SHD



Light distribution files

NICHIA

LED NCSxE17A
 FWHM / FWTM Asymmetric
 Efficiency 72 %
 Peak intensity 0.7 cd/lm
 LEDs/each optic 1
 Light colour/type White
 Required components:
 C17051_DAISY-7X1-SHD-MATT

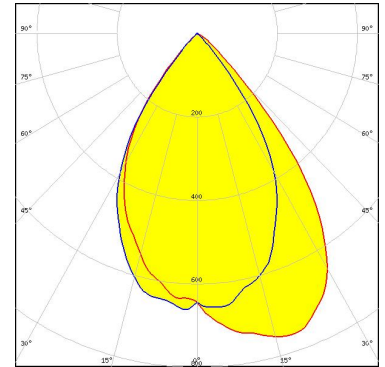


Light distribution files

OPTICAL RESULTS (SIMULATED):



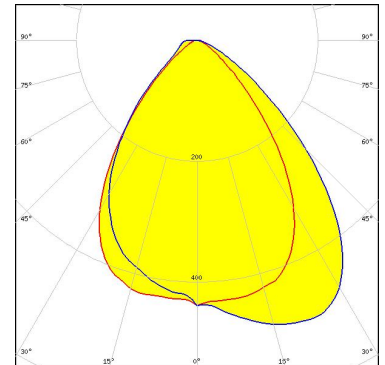
LED LUXEON 5050 Square LES
FWHM / FWTM Asymmetric
Efficiency 80 %
Peak intensity 0.8 cd/lm
LEDs/each optic 1
Light colour/type White
Required components:
C16872_DAISY-7X1-SHD



Light distribution files



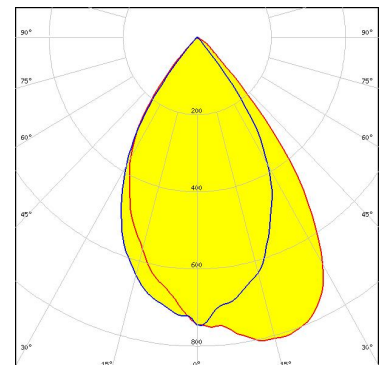
LED LinLED 280x28mm 1100lm 8x0 2C 42V DAISY-7X1 G1
FWHM / FWTM Asymmetric
Efficiency 77 %
Peak intensity 0.5 cd/lm
LEDs/each optic 4
Light colour/type White
Required components:



Light distribution files



LED LH231B
FWHM / FWTM Asymmetric
Efficiency 80 %
Peak intensity 0.8 cd/lm
LEDs/each optic 1
Light colour/type White
Required components:
C16872_DAISY-7X1-SHD



Light distribution files

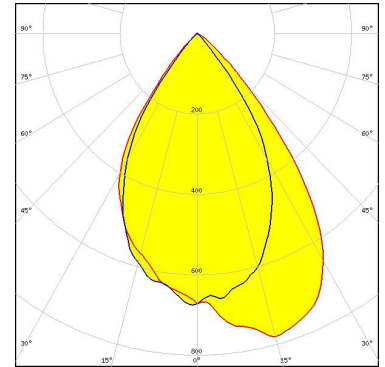
OPTICAL RESULTS (SIMULATED):

SAMSUNG

LED LH231B
FWHM / FWTM Asymmetric
Efficiency 79 %
Peak intensity 0.8 cd/lm
LEDs/each optic 2
Light colour/type White

Required components:

C16872_DAISSY-7X1-SHD



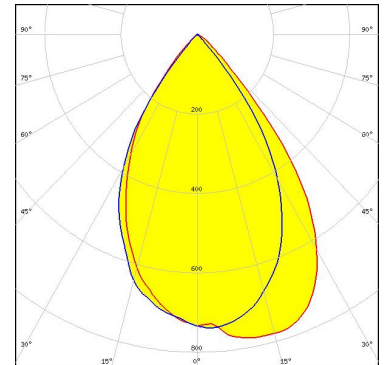
Light distribution files

SAMSUNG

LED LM28xB Series
FWHM / FWTM Asymmetric
Efficiency 81 %
Peak intensity 0.8 cd/lm
LEDs/each optic 2
Light colour/type White

Required components:

C16872_DAISSY-7X1-SHD



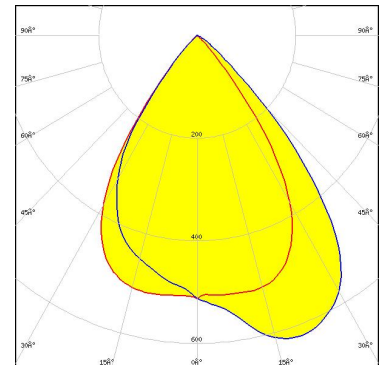
Light distribution files

TRIDONIC

LED LLE 24x280mm 750lm 8x0 LVD ADV1
FWHM / FWTM Asymmetric
Efficiency 72 %
Peak intensity 0.6 cd/lm
LEDs/each optic 4
Light colour/type White

Required components:

C16872_DAISSY-7X1-SHD



Light distribution files

GENERAL INFORMATION:

NOTE: The typical beam angle will be changed by different color, chip size and chip position tolerance. The typical total beam angle is the full angle measured where the luminous intensity is half of the peak value.

MATERIALS:

As part of our continuous research and improvement processes, and to ensure the best possible quality and availability of our products, LEDiL reserves the right to change material grades without notice.

PRODUCT DATA USER AGREEMENT AND DISCLAIMER:

The measured data in the provided downloadable LEDiL Product Datasheets and Mechanical 2D-Drawings is rounded and provided as reference for planning. LEDiL Oy's optical specifications have been verified by conducting performance testing of the products in accordance with the company's quality system. The reported data are averaged results of multiple measurements with typical variation. LEDiL Oy reserves the right to without prior notification make changes and improvements to its products.

LEDiL Oy assumes neither warranty, nor guarantee nor any other liability of any kind for the contents and correctness of the provided data. The provided data has been generated with highest diligence but the provided data may in reality not represent the complete possible variation range of all intrinsic parameters. Therefore, in certain cases a deviation from the provided data could occur.

LEDiL Oy reserves the right to undertake technical changes of its products without further notification which could lead to changes in the provided data. LEDiL Oy assumes no liability of any kind for the possible deviation from any provided data or any other damage resulting from the usage of the provided data.

The user agrees to this disclaimer and user agreement with the download or usage of the provided files.

LEDiL Oy

Joensuunkatu 7
FI-24100 SALO
Finland

LEDiL Inc.

228 West Page Street
Suite D
Sycamore IL 60178
USA

Ledil Optics Technology (Shenzhen) Co., Ltd.

405 , Block B
Casic Motor Building
Shenzhen 518057
P.R.CHINA

Local sales and technical support

[www.ledil.com/
where_to_buy](http://www.ledil.com/where_to_buy)

Shipping locations

Poznan, Poland
Hong Kong, China

Distribution Partners

[www.ledil.com/
where_to_buy](http://www.ledil.com/where_to_buy)